



# TA CHEN

## STAINLESS STEEL

## 150LB SCREWED FITTINGS

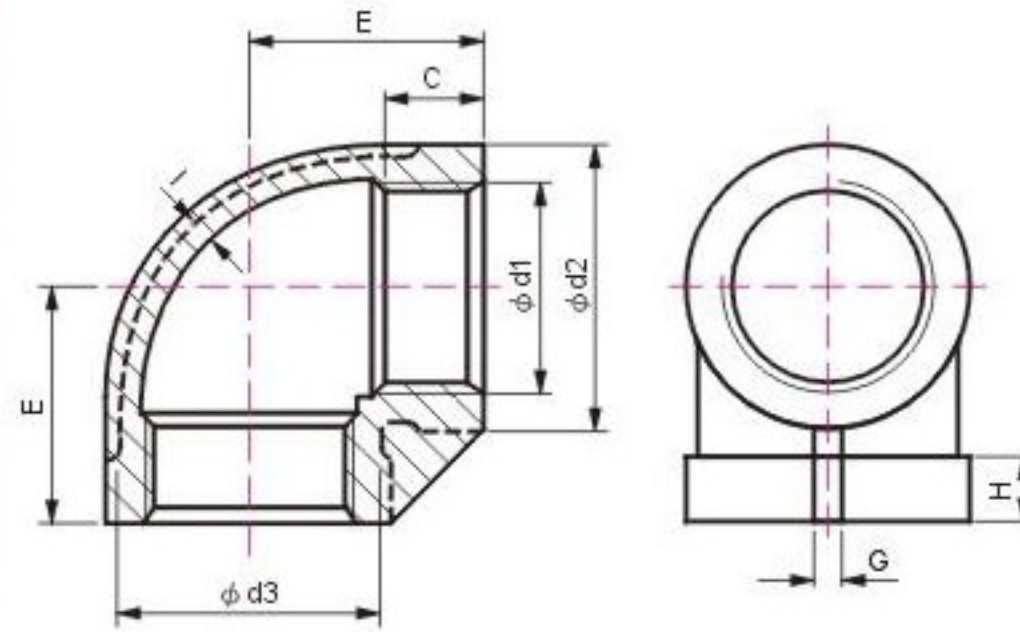


# I N D E X

9LB	90° ELBOWS BANDED EQUAL	
TEB	TEES BANDED EQUAL.....	2
4LB	45° ELBOWS BANDED EQUAL	
SLB	STREET ELBOWS 90° BANDED.....	3
+LB	CROSSES BANDED EQUAL	
UCF	UNIONS F/F.....	4
UCM	UNIONS M/F	
UCB	UNIONS B/F.....	5
RCB	ROUND CAPS	
SPG	SQUARE HEAD PLUGS.....	6
HPG	HEX HEAD PLUGS	
HCB	HEX CAPS.....	7
HNT	HEX NUTS	
HBU	HEX BUSHINGS (1/4" x 1/8" ~ 1" x 3/4").....	8
HBU	HEX BUSHINGS (1 1/4" x 1/8" ~ 2" x 1 1/2").....	9
HBU	HEX BUSHINGS (2 1/2" x 1/2" ~ 4" x 3").....	10
RNP	REDUCING HEX NIPPLE (1/4" x 1/8" ~ 1 1/2" x 1 1/4").....	11
RNP	REDUCING HEX NIPPLE (2" x 1/4" ~ 4" x 3").....	12
HNP	HEX NIPPLE	
ONP	HOSE NIPPLE.....	13
FCP	COUPLINGS/SOCKETS	
HCP	HALF COUPLINGS/HALF SOCKETS .....	14
RSB	REDUCING COUPLINGS (1/4" x 1/8" ~ 1" x 3/4").....	15
RSB	REDUCING COUPLINGS (1 1/4" x 1/4" ~ 2" x 1 1/2").....	16
RSB	REDUCING COUPLINGS (2 1/2" x 3/4" ~ 4" x 3").....	17
BNP	BARREL NIPPLE	
WNP	WELDING NIPPLE.....	18
	STANDARD PACKING QUANTITY FOR EACH CARTON.....	19
	WEIGHT LIST.....	20

# 9LB

# 90° ELBOWS BANDED EQUAL



- THREAD: NPT, BSP (BS21), BSPT, DIN.
- CF8 (304) & CF8M (316).

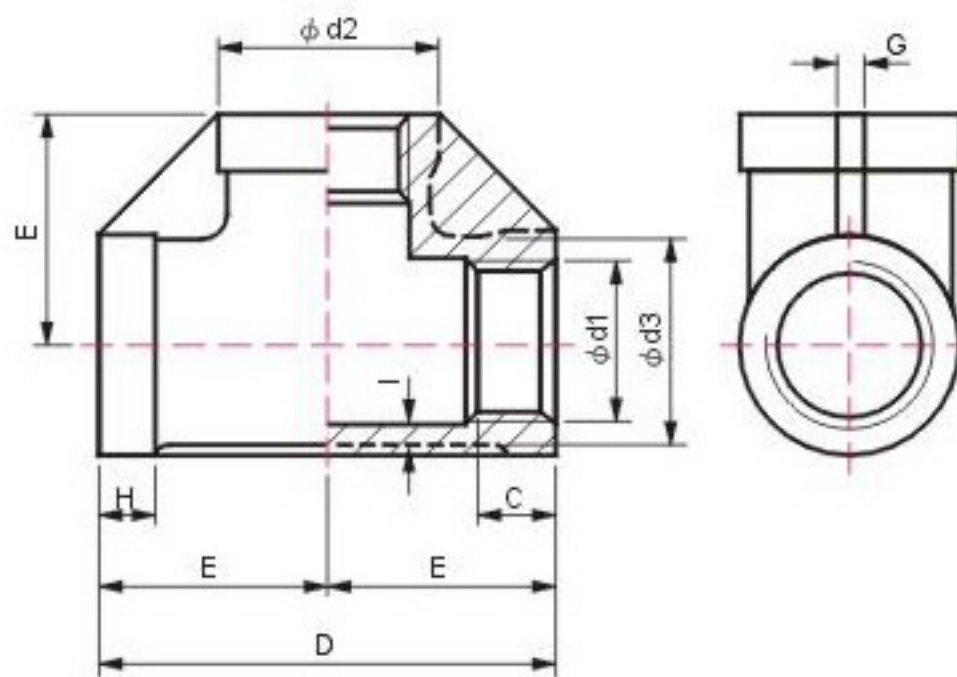
## DIMENSIONS

UNIT:mm

SIZE SPEC.	1/8"	1/4"	3/8"	1/2"	3/4"	1"	1 1/4"	1 1/2"	2"	2 1/2"	3"	4"
d1	1/8"	1/4"	3/8"	1/2"	3/4"	1"	1 1/4"	1 1/2"	2"	2 1/2"	3"	4"
d2	16.0	19.0	22.5	28.0	34.0	43.0	51.0	59.0	72.0	90.0	106.0	132.0
d3	13.5	15.5	19.5	26.0	31.5	40.0	48.0	56.5	68.0	86.0	102.0	127.0
C	6.2	9.4	9.7	10.0	10.5	14.0	16.0	18.0	18.0	22.0	24.0	25.0
E	17.0	19.5	24.0	29.0	32.0	37.0	43.5	48.0	55.5	67.0	77.0	96.0
G	3.5	4.0	4.0	3.0	3.0	4.0	5.0	5.0	5.5	9.0	10.0	8.5
H	6.0	6.0	6.5	7.5	8.5	10.0	11.0	12.0	13.0	14.0	15.0	15.0
I	2.0	2.0	2.5	2.0	2.0	2.5	2.5	2.5	2.5	3.0	3.5	3.5

# TEB

# TESS BANDED EQUAL



- THREAD: NPT, BSP (BS21), BSPT, DIN.
- CF8 (304) & CF8M (316).

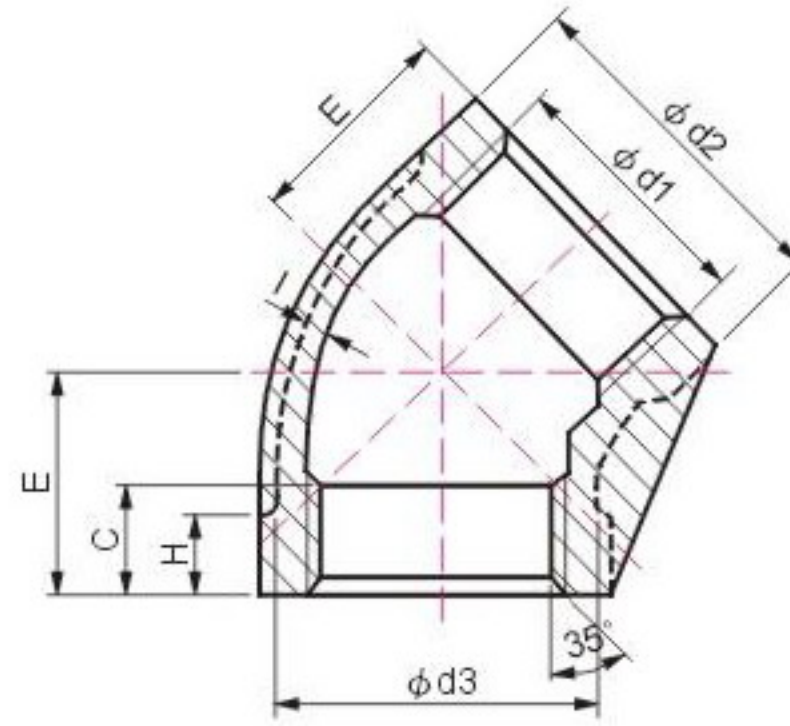
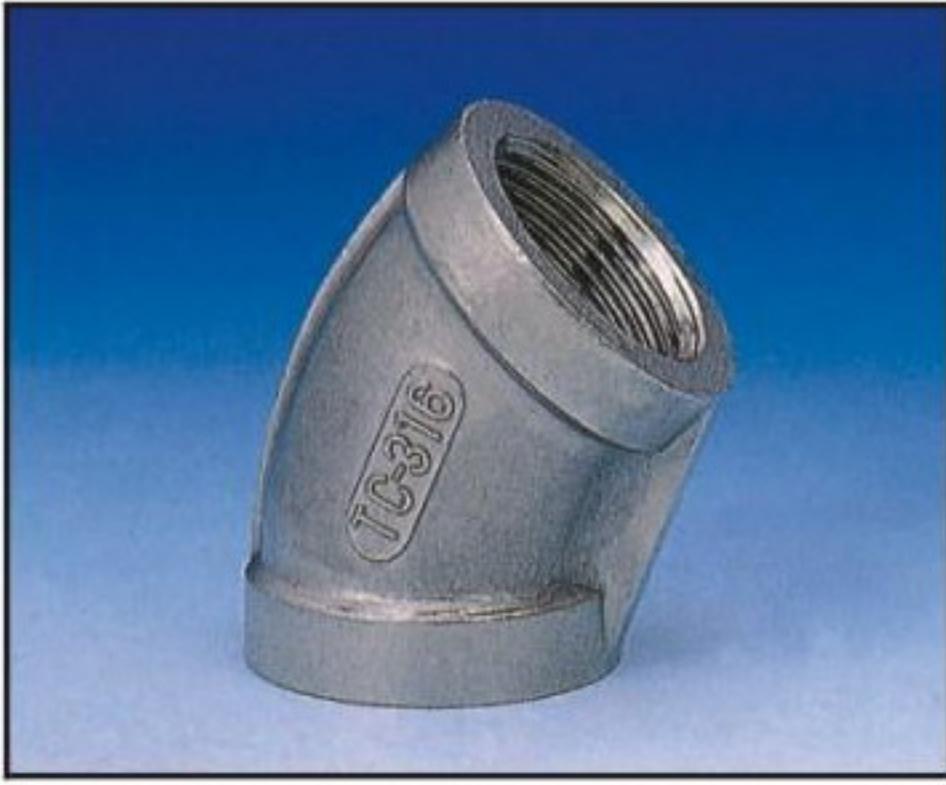
## DIMENSIONS

UNIT:mm

SIZE SPEC.	1/8"	1/4"	3/8"	1/2"	3/4"	1"	1 1/4"	1 1/2"	2"	2 1/2"	3"	4"
d1	1/8"	1/4"	3/8"	1/2"	3/4"	1"	1 1/4"	1 1/2"	2"	2 1/2"	3"	4"
d2	16.0	19.0	22.5	28.0	34.0	43.0	51.0	59.0	72.0	90.0	106.0	132.0
d3	13.5	15.5	19.5	26.0	31.5	40.0	48.0	56.5	68.0	87.5	101.5	127.0
C	6.2	9.4	9.7	10.0	12.0	14.5	16.5	17.5	18.0	23.0	24.5	29.0
D	36.0	39.0	46.0	58.0	65.0	74.0	89.0	96.0	113.0	136.0	157.0	194.0
E	18.0	19.5	23.0	29.0	32.5	37.0	44.5	48.0	56.5	68.0	78.5	97.0
G	3.0	3.0	3.0	3.0	3.0	4.0	5.0	5.0	6.0	9.0	10.0	10.0
H	6.0	6.0	5.5	7.5	8.5	9.5	10.5	11.5	12.0	13.5	15.0	15.5
I	2.5	2.0	2.5	2.0	2.0	2.0	2.0	2.5	2.5	4.0	4.0	4.0

# 4LB

# 45° ELBOWS BANDED EQUAL



- THREAD: NPT, BSP (BS21), BSPT, DIN.
- CF8 (304) & CF8M (316).

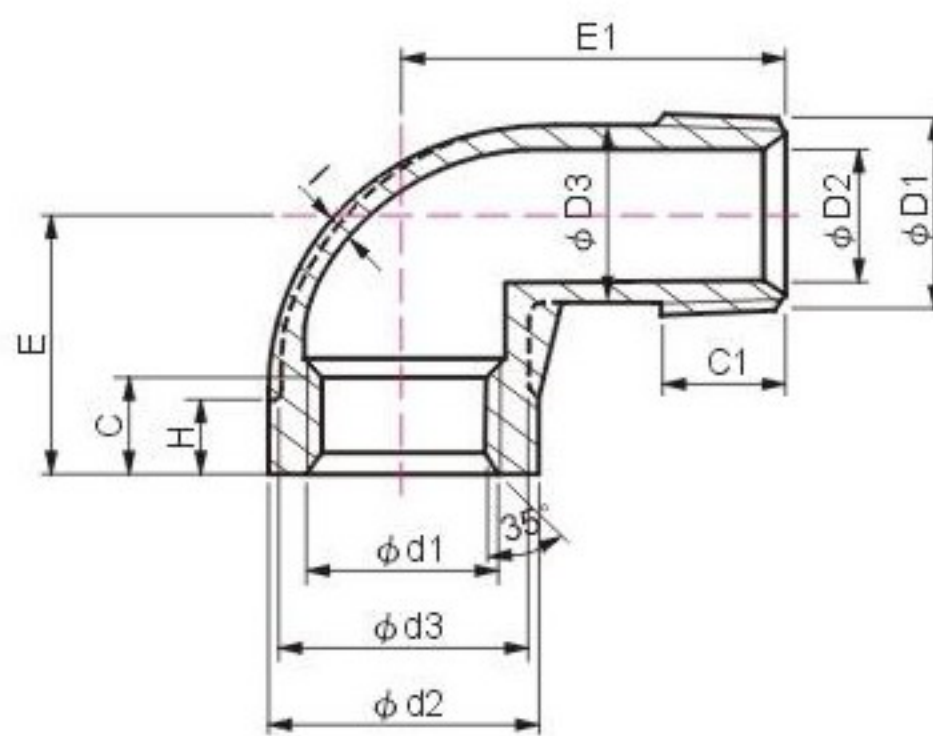
## DIMENSIONS

UNIT:mm

SIZE SPEC.	1/8"	1/4"	3/8"	1/2"	3/4"	1"	1 1/4"	1 1/2"	2"	2 1/2"	3"	4"
d1	1/8"	1/4"	3/8"	1/2"	3/4"	1"	1 1/4"	1 1/2"	2"	2 1/2"	3"	4"
d2	16.0	19.0	22.5	30.0	36.0	45.0	53.0	60.0	72.0	90.0	106.0	133.0
d3	13.5	15.5	19.5	28.0	34.0	40.0	50.0	56.0	68.0	87.0	101.5	128.0
C	6.2	9.4	9.7	10.0	11.0	14.0	18.0	18.0	18.0	22.0	25.0	25.0
E	16.0	17.0	19.0	21.0	24.0	28.0	33.0	36.0	42.0	49.0	54.0	65.0
H	6.0	6.5	6.0	9.0	10.0	10.0	10.0	11.0	13.0	14.0	15.0	15.0
I	2.0	2.0	2.0	2.5	2.5	2.5	2.5	2.5	2.5	4.0	4.0	4.0

# SLB

# STREET ELBOWS 90° BANDED



- THREAD: NPT, BSP (BS21), BSPT, DIN.
- CF8 (304) & CF8M (316).

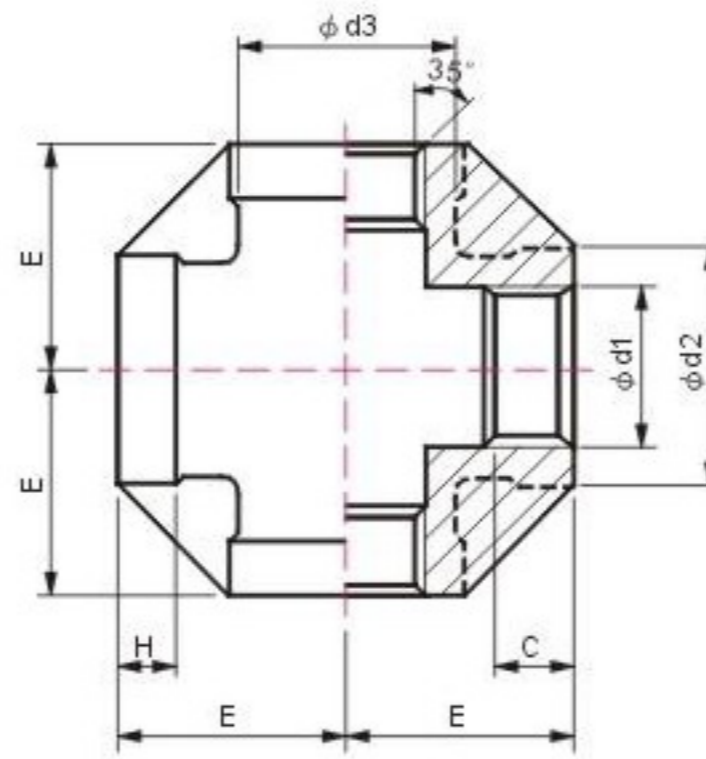
## DIMENSIONS

UNIT:mm

SIZE SPEC.	1/8"	1/4"	3/8"	1/2"	3/4"	1"	1 1/4"	1 1/2"	2"	2 1/2"	3"	4"
d1	1/8"	1/4"	3/8"	1/2"	3/4"	1"	1 1/4"	1 1/2"	2"	2 1/2"	3"	4"
d2	15.0	18.0	22.5	28.0	36.0	45.0	52.0	60.0	73.0	90.0	106.0	132.0
d3	12.0	15.0	20.0	26.0	33.0	42.0	49.0	56.0	69.0	86.0	101.0	128.0
C	6.2	9.4	9.7	10.0	12.0	14.0	17.0	17.0	18.0	23.0	24.0	25.0
E	18.0	21.0	24.0	27.0	33.0	37.0	44.0	47.0	59.0	66.0	77.0	98.0
H	4.0	5.0	6.0	8.0	9.0	9.0	11.0	11.0	13.0	14.0	15.0	18.0
D1	1/8"	1/4"	3/8"	1/2"	3/4"	1"	1 1/4"	1 1/2"	2"	2 1/2"	3"	4"
D2	5.0	6.0	9.0	14.0	20.0	25.0	33.0	40.0	50.0	57.0	74.0	97.0
D3	8.5	12.0	14.0	19.0	25.0	31.0	38.0	45.0	57.0	66.0	81.0	106.0
C1	8.0	11.0	12.0	13.0	13.0	17.0	19.0	19.0	20.0	24.0	29.0	34.0
E1	26.0	29.0	36.0	41.0	47.0	53.0	63.0	69.0	80.0	105.0	113.0	130.0
I	2.0	2.0	2.0	2.0	2.0	2.0	2.5	2.5	2.5	4.0	4.0	4.0

# +LB

# CROSSES BANDED EQUAL



- THREAD: NPT, BSP (BS21), BSPT, DIN.
- CF8 (304) & CF8M (316).

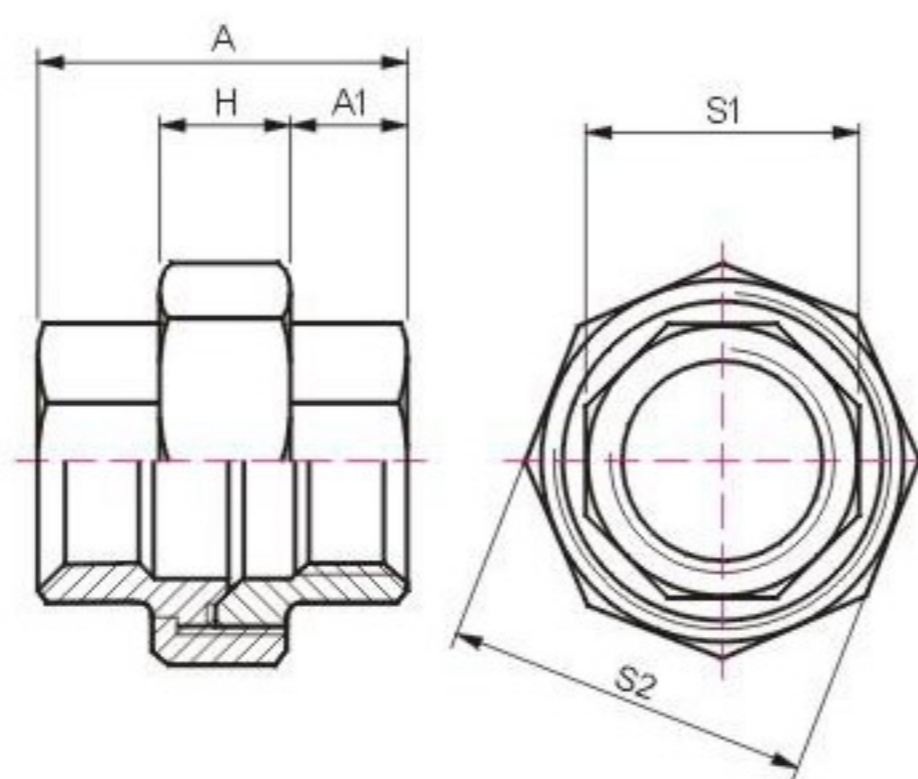
## DIMENSIONS

UNIT:mm

SIZE SPEC.	1/8"	1/4"	3/8"	1/2"	3/4"	1"	1 1/4"	1 1/2"	2"	2 1/2"	3"	4"
d1	1/8"	1/4"	3/8"	1/2"	3/4"	1"	1 1/4"	1 1/2"	2"	2 1/2"	3"	4"
d2	16.0	20.0	25.0	30.0	36.0	45.0	53.0	60.0	73.0	90.0	106.0	132.0
d3	14.0	18.0	23.0	28.0	34.0	42.0	50.0	56.0	69.0	86.0	102.0	128.0
C	6.2	9.4	9.7	10.0	12.0	14.0	18.0	18.0	18.0	22.0	25.0	26.0
E	17.5	19.0	23.0	29.0	32.5	37.5	44.0	48.0	59.0	68.0	78.0	97.0
H	6.0	7.0	7.0	7.0	9.0	10.0	11.0	12.0	13.0	14.0	15.0	15.0

# UCF

# UNIONS F/F



- THREAD: NPT, BSP (BS21), BSPT, DIN.
- CF8 (304) & CF8M (316).

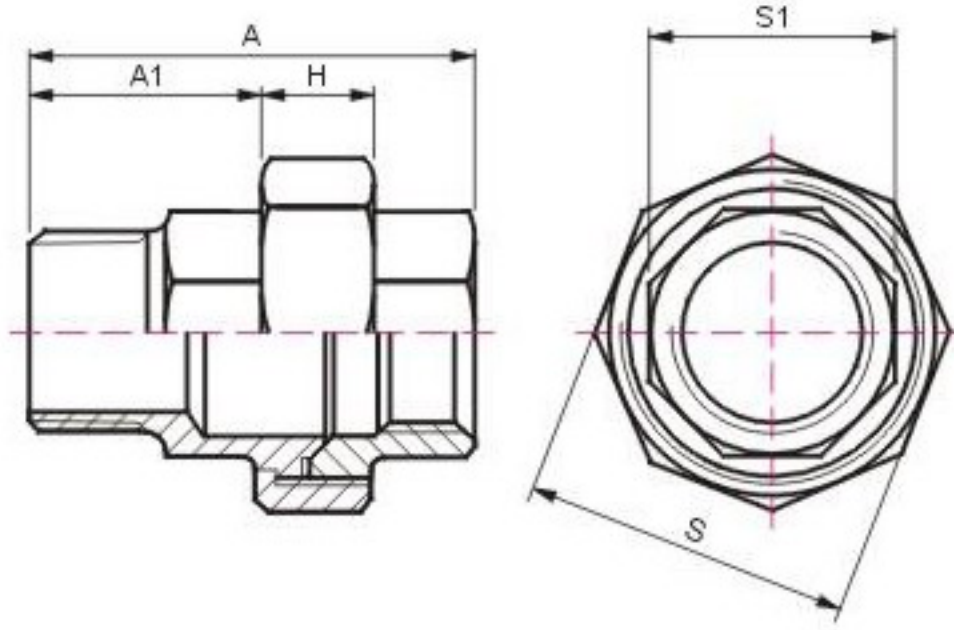
## DIMENSIONS

UNIT:mm

SIZE SPEC.	1/8"	1/4"	3/8"	1/2"	3/4"	1"	1 1/4"	1 1/2"	2"	2 1/2"	3"	4"
A±1.5	37	37	39	41	42	51	52	56	60	75	89	99
A1±0.5	12	12	12	13	16	17	16	18	18	26	30	32
H±0.5	15	15	16	15	16	18	21	22	25	25	29	34
S1±1.0	18	18	23	27	32	41	50	56	69	85	99	125
S2±1.0	29	29	36	41	49	58	68	77	92	109	125	156

# UCM

# UNIONS M/F



- THREAD: NPT, BSP (BS21), BSPT, DIN.
- CF8 (304) & CF8M (316).

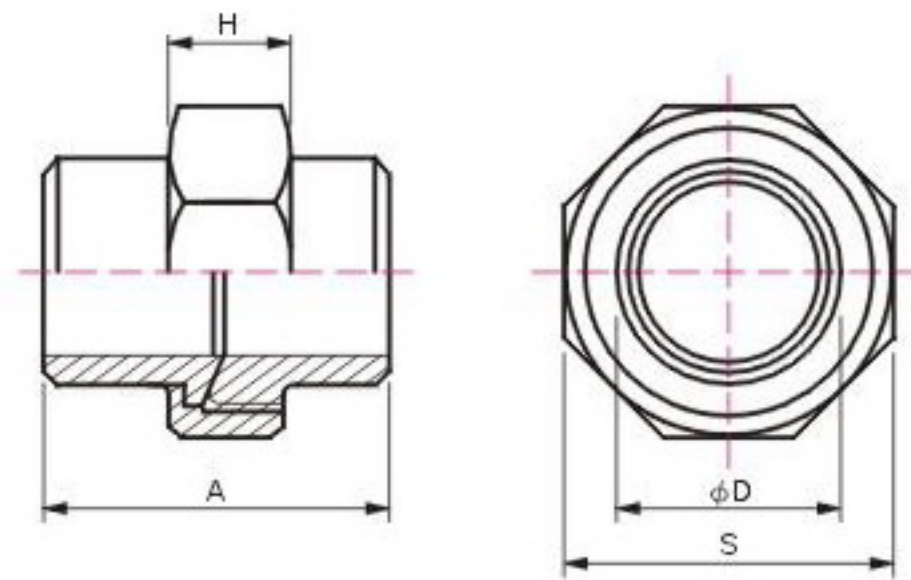
## DIMENSIONS

UNIT:mm

SIZE SPEC.	1/8"	1/4"	3/8"	1/2"	3/4"	1"	1 1/4"	1 1/2"	2"	2 1/2"	3"	4"
A±1.5	52	53	57	62	66	72	78	81	88	100	119	132
A1±0.5	27	27	31	34	34	39	42	43	47	51	62	67
H±0.5	15	15	15	15	16	18	21	22	25	25	29	34
S1±1.0	18	18	23	27	32	41	50	56	69	85	99	125
S2±1.0	29	29	36	41	49	58	68	77	92	109	125	156

# UCB

# UNIONS B/W



- CF8 (304) & CF8M (316).
- SHIPPING QUANTITY: ±10%.

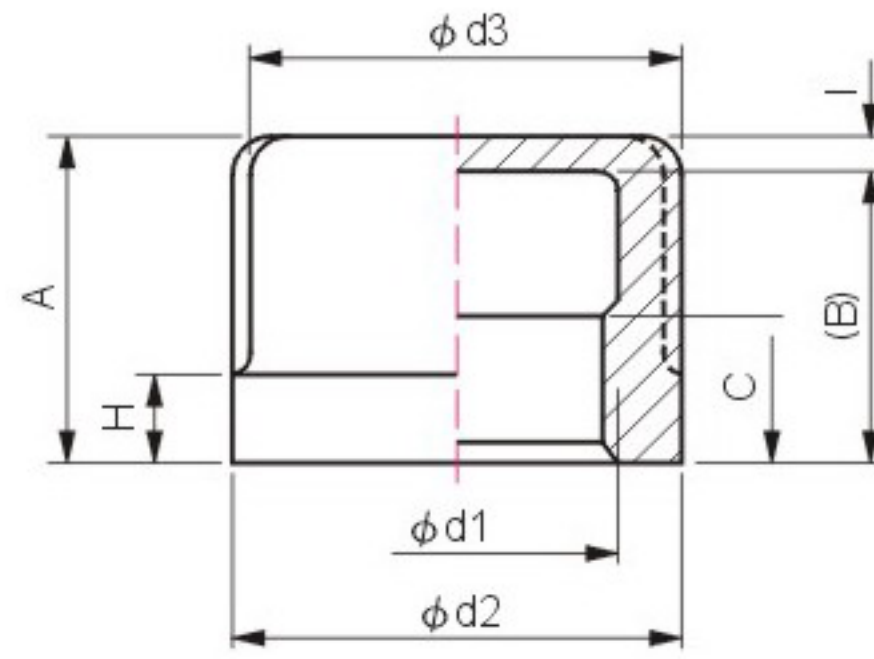
## DIMENSIONS

UNIT:mm

SIZE SPEC.	1/4"	3/8"	1/2"	3/4"	1"	1 1/4"	1 1/2"	2"	2 1/2"	3"
A±1.2	32.0	38.0	40.0	47.0	49.5	54.0	57.0	60.0	70.0	81.0
D±0.5	13.8	17.3	21.6	27.1	34.0	42.8	48.6	60.6	76.3	89.1
S±0.5	29.0	36.0	41.0	49.0	58.0	67.7	76.7	91.5	109.0	125.0
H±0.5	14.0	14.0	14.0	14.0	18.0	19.0	21.0	24.0	24.0	28.0

# RCB

# ROUND CAPS



- THREAD: NPT, BSP (BS21), BSPT, DIN.
- CF8 (304) & CF8M (316).

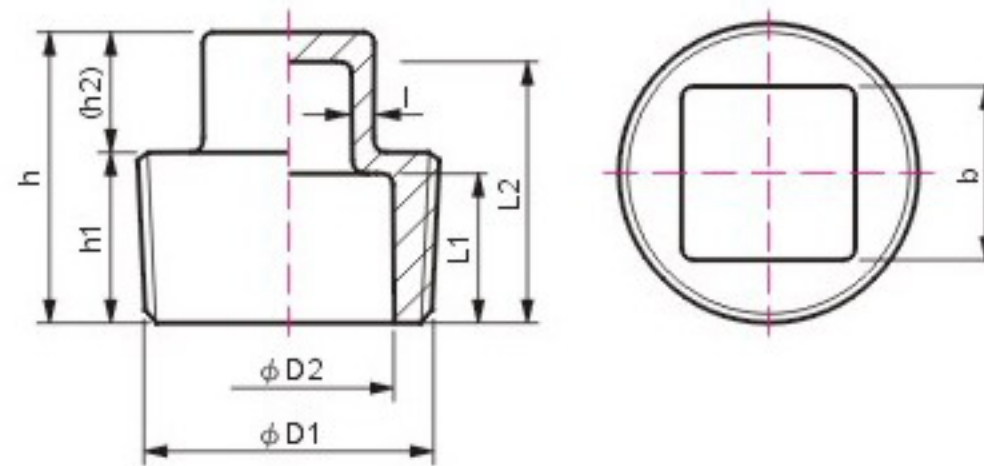
## DIMENSIONS

UNIT:mm

SIZE SPEC.	1/8"	1/4"	3/8"	1/2"	3/4"	1"	1 1/4"	1 1/2"	2"	2 1/2"	3"	4"
d1	1/8"	1/4"	3/8"	1/2"	3/4"	1"	1 1/4"	1 1/2"	2"	2 1/2"	3"	4"
d2	16.0	20.0	25.5	30.0	36.0	44.5	53.0	60.0	74.0	91.0	110.0	139.0
d3	13.5	18.0	23.5	28.0	33.0	41.5	50.0	57.0	70.0	86.0	104.0	133.0
A	15.0	22.0	24.5	28.0	28.0	32.0	32.5	36.0	39.0	43.0	47.5	51.0
C	6.2	9.4	9.7	10.0	12.0	15.0	18.0	18.0	18.0	22.0	23.0	25.0
H	6.5	6.5	7.5	7.5	8.5	9.0	10.0	11.0	12.0	14.0	14.0	15.0
I	3.0	3.0	2.5	3.0	3.0	3.0	4.0	5.0	5.0	6.0	6.0	6.0
(B)	12.0	19.0	22.0	25.0	25.0	29.0	28.5	31.0	34.0	37.0	41.5	45.0

# SPG

# SQUARE HEAD PLUGS



- THREAD: NPT, BSP (BS21), BSPT, DIN.
- CF8 (304) & CF8M (316).

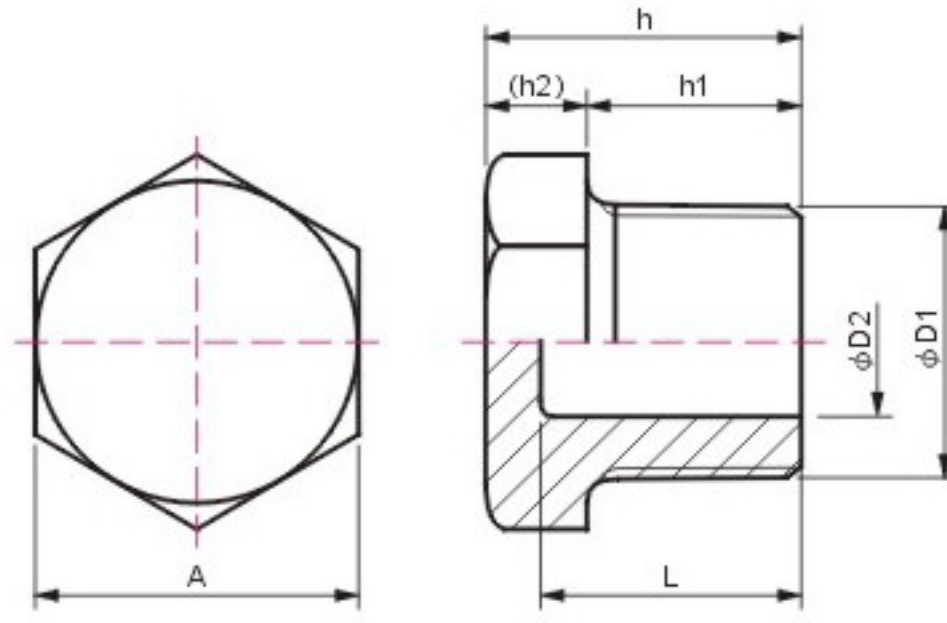
## DIMENSIONS

UNIT:mm

SIZE SPEC.	1/8"	1/4"	3/8"	1/2"	3/4"	1"	1 1/4"	1 1/2"	2"	2 1/2"	3"	4"
b	7.0	9.0	10.0	13.0	18.0	19.0	23.0	26.0	29.0	40.0	44.0	59.0
D1	1/8"	1/4"	3/8"	1/2"	3/4"	1"	1 1/4"	1 1/2"	2"	2 1/2"	3"	4"
D2	—	—	—	14.5	18.0	25.0	34.0	39.0	50.0	59.0	75.0	101.0
L1	—	—	—	11.0	16.0	18.0	19.0	21.0	24.0	24.0	27.0	33.0
L2	—	—	—	21.0	26.0	31.0	34.0	36.0	42.0	41.0	50.0	55.0
h	18.0	19.0	20.0	23.0	30.0	33.0	39.0	40.0	45.0	48.0	54.0	59.0
h1	10.0	10.0	11.0	13.0	18.0	21.0	23.0	23.0	26.0	28.0	32.0	37.0
(h2)	8.0	9.0	9.0	10.0	12.0	12.0	16.0	17.0	19.0	20.0	22.0	22.0
I	—	—	—	2.5	2.5	2.5	2.5	2.5	2.5	3.0	3.0	3.0

# HPG

## HEX HEAD PLUGS



- THREAD: NPT, BSP (BS21), BSPT, DIN.
- CF8 (304) & CF8M (316).

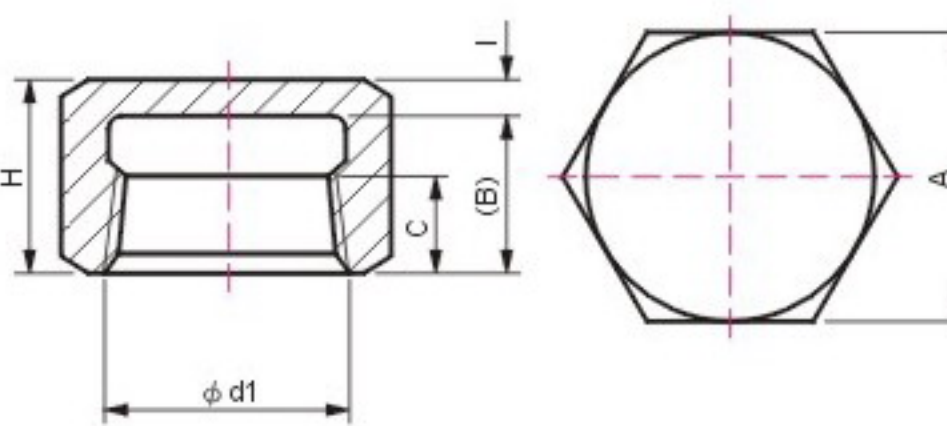
### DIMENSIONS

UNIT:mm

SIZE SPEC.	1/8"	1/4"	3/8"	1/2"	3/4"	1"	1 1/4"	1 1/2"	2"	2 1/2"	3"	4"
A	14.0	17.0	21.0	26.0	32.0	38.0	46.0	52.0	65.0	80.0	95.0	120.0
D1	1/8"	1/4"	3/8"	1/2"	3/4"	1"	1 1/4"	1 1/2"	2"	2 1/2"	3"	4"
D2	—	—	9.0	14.5	18.0	26.0	34.0	38.5	50.0	60.0	75.0	100.0
L	—	—	20.5	23.0	24.0	30.0	31.0	33.0	34.0	43.5	44.5	45.0
h	18.5	23.0	23.5	27.0	28.0	34.0	35.0	36.0	37.5	48.5	50.0	51.0
h1	12.5	17.0	17.0	19.0	20.0	25.0	25.0	25.0	26.0	36.5	37.0	37.0
(h2)	6.0	6.0	6.5	8.0	8.0	9.0	10.0	11.0	11.5	12.0	13.0	14.0

# HCB

## HEX CAPS



- THREAD: NPT, BSP (BS21), BSPT, DIN.
- CF8 (304) MATERIAL IS NOT AVAILABLE.
- CF8 (316) SHIPPING QUANTITY: ±10%.

### DIMENSIONS

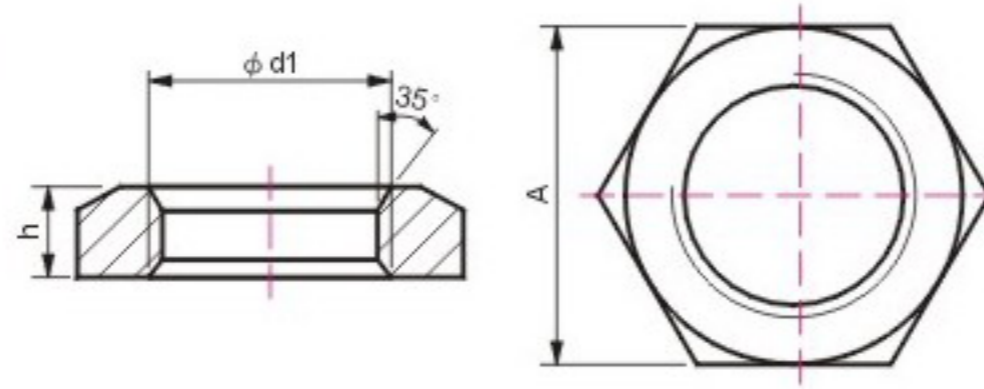
UNIT:mm

SIZE SPEC.	1/8"	1/4"	3/8"	1/2"	3/4"	1"	1 1/4"	1 1/2"	2"	2 1/2"	3"	4"
A	16.0	18.0	20.0	26.0	32.0	39.0	49.0	55.0	66.0	85.0	100.0	125.0
D1	1/8"	1/4"	3/8"	1/2"	3/4"	1"	1 1/4"	1 1/2"	2"	2 1/2"	3"	4"
C	6.2	9.4	9.7	10.0	11.0	15.0	17.5	18.0	19.0	22.0	24.0	26.0
H	16.0	20.0	21.0	22.5	23.0	26.0	28.5	32.0	35.0	42.0	45.5	55.0
I	3.0	3.0	3.0	3.0	3.0	3.0	4.0	4.0	3.0	6.0	6.0	6.0
(B)	13.0	17.0	18.0	19.5	20.0	23.0	24.5	28.0	32.0	36.0	39.5	49.0



# HNT

# HEX NUTS



- THREAD: NPT, BSP (BS21), BSPT, DIN.
- CF8 (304) MATERIAL IS NOT AVAILABLE.
- CF8 (316) SHIPPING QUANTITY: ±10%.

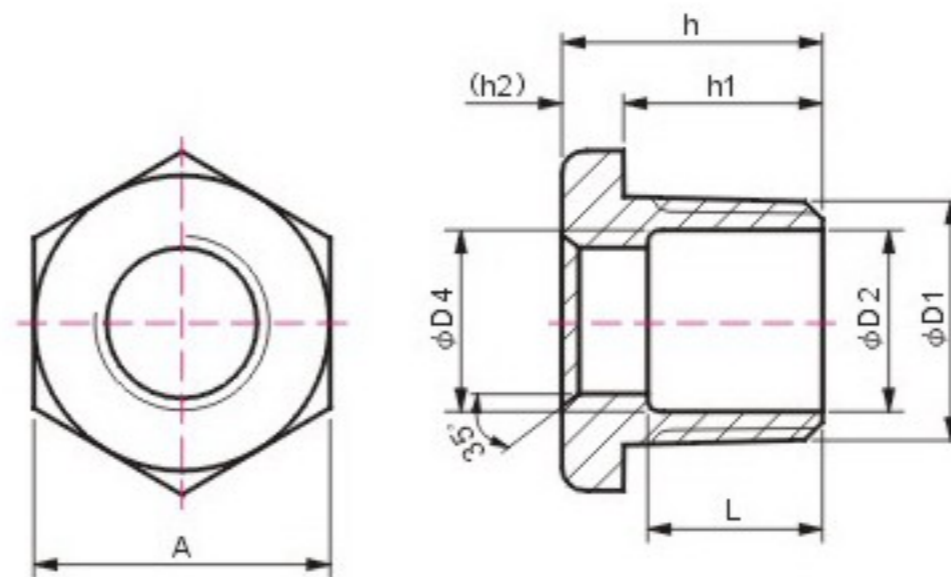
## DIMENSIONS

UNIT:mm

SIZE SPEC.	1/8"	1/4"	3/8"	1/2"	3/4"	1"	1 1/4"	1 1/2"	2"	2 1/2"	3"	4"
d1	1/8"	1/4"	3/8"	1/2"	3/4"	1"	1 1/4"	1 1/2"	2"	2 1/2"	3"	4"
A	19.0	22.0	27.0	32.0	36.0	46.0	55.0	60.0	75.0	90.0	100.0	130.0
h	8.5	8.5	9.0	9.0	10.0	11.0	12.0	13.0	13.5	17.5	21.0	22.0

# HBU

# HEX BUSHINGS

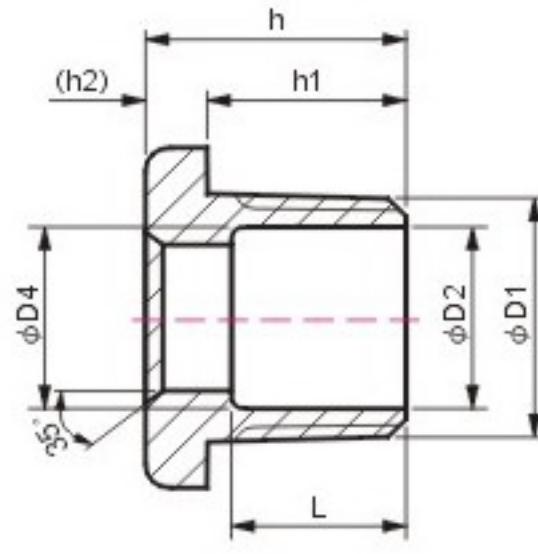
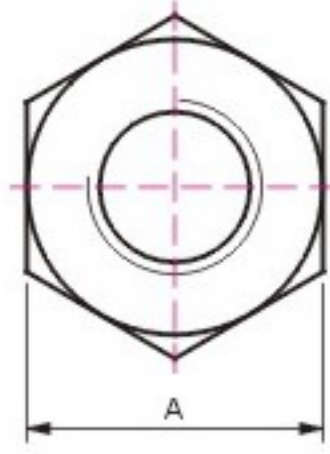


- THREAD: NPT, BSP (BS21), BSPT, DIN.
- CF8 (304) & CF8M (316).

## DIMENSIONS

UNIT:mm

SIZE SPEC.	1/4"x1/8"	3/8"x1/8"	3/8"x1/4"	1/2"x1/8"	1/2"x1/4"	1/2"x3/8"	3/4"x1/8"	3/4"x1/4"	3/4"x3/8"	3/4"x1/2"	1"x1/8"	1"x1/4"	1"x3/8"	1"x1/2"	1"x3/4"
A	17.0	22.0	22.0	26.0	26.0	26.0	32.0	32.0	32.0	32.0	38.0	38.0	38.0	38.0	38.0
L	15.0	15.0	—	17.0	17.0	—	17.5	17.5	17.5	—	24.5	24.5	24.5	22.0	20.5
D1	1/4"	3/8"	3/8"	1/2"	1/2"	1/2"	3/4"	3/4"	3/4"	3/4"	1"	1"	1"	1"	1"
D2	8.5	11.0	11.0	14.5	14.5	14.5	18.0	18.0	18.0	18.0	26.0	26.0	26.0	26.0	26.0
D4	1/8"	1/8"	1/4"	1/8"	1/4"	3/8"	1/8"	1/4"	3/8"	1/2"	1/8"	1/4"	3/8"	1/2"	3/4"
h	22.5	23.0	23.0	25.5	25.5	25.5	26.5	26.5	26.5	26.5	33.5	33.5	33.5	33.5	33.5
h1	17.0	17.0	17.0	20.0	20.0	20.0	20.0	20.0	20.0	20.0	25.5	25.5	25.5	25.5	25.5
(h2)	5.5	6.0	6.0	5.5	5.5	5.5	6.5	6.5	6.5	6.5	8.0	8.0	8.0	8.0	8.0



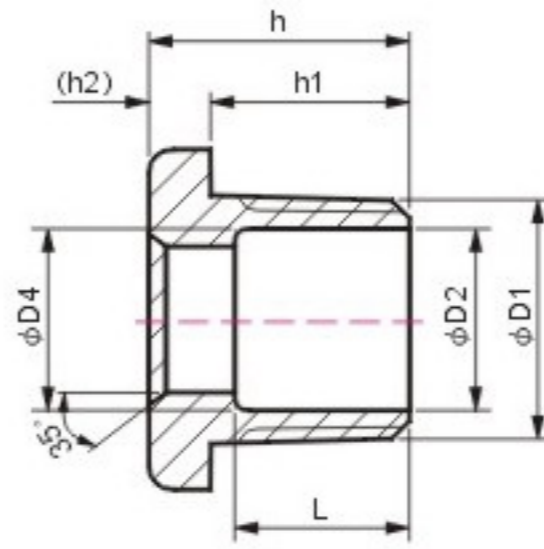
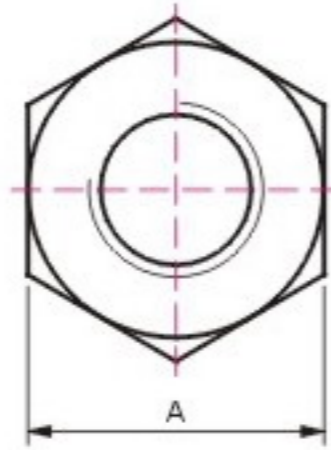
- THREAD: NPT, BSP (BS21), BSPT, DIN.
- CF8 (304) & CF8M (316).

## DIMENSIONS

UNIT:mm

SIZE SPEC.	1 1/4" x 1/8"	1 1/4" x 1/4"	1 1/4" x 3/8"	1 1/4" x 1/2"	1 1/4" x 3/4"	1 1/4" x 1"	1 1/2" x 1/8"	1 1/2" x 1/4"	1 1/2" x 3/8"	1 1/2" x 1/2"	1 1/2" x 3/4"
A	46.0	46.0	46.0	46.0	46.0	46.0	52.0	52.0	52.0	52.0	52.0
L	26.0	24.5	24.5	23.0	21.0	19.5	27.0	27.0	26.0	24.0	23.0
D1	1 1/4"	1 1/4"	1 1/4"	1 1/4"	1 1/4"	1 1/4"	1 1/2"	1 1/2"	1 1/2"	1 1/2"	1 1/2"
D2	35.0	35.0	35.0	35.0	35.0	35.0	40.0	40.0	40.0	40.0	40.0
D4	1/8"	1/4"	3/8"	1/2"	3/4"	1"	1/8"	1/4"	3/8"	1/2"	3/4"
h	34.0	34.0	34.0	34.0	34.0	34.0	36.0	36.0	36.0	36.0	36.0
h1	26.0	26.0	26.0	26.0	26.0	26.0	26.0	26.0	26.0	26.0	26.0
(h2)	8.0	8.0	8.0	8.0	8.0	8.0	10.0	10.0	10.0	10.0	10.0

SIZE SPEC.	1 1/2" x 1"	1 1/2" x 1 1/4"	2" x 1/8"	2" x 1/4"	2" x 3/8"	2" x 1/2"	2" x 3/4"	2" x 1"	2" x 1 1/4"	2" x 1 1/2"
A	52.0	52.0	63.0	63.0	63.0	63.0	63.0	63.0	63.0	63.0
L	21.0	18.5	28.0	27.0	27.0	25.0	23.0	22.0	20.0	20.0
D1	1 1/2"	1 1/2"	2"	2"	2"	2"	2"	2"	2"	2"
D2	40.0	40.0	51.0	51.0	51.0	51.0	51.0	51.0	51.0	51.0
D4	1"	1 1/4"	1/8"	1/4"	3/8"	1/2"	3/4"	1"	1 1/4"	1 1/2"
h	36.0	36.0	36.0	36.0	36.0	36.0	36.0	36.0	36.0	36.0
h1	26.0	26.0	25.5	25.5	25.5	25.5	25.5	25.5	25.5	25.5
(h2)	10.0	10.0	10.5	10.5	10.5	10.5	10.5	10.5	10.5	10.5



- THREAD: NPT, BSP (BS21), BSPT, DIN.
- CF8 (304) & CF8M (316).

## DIMENSIONS

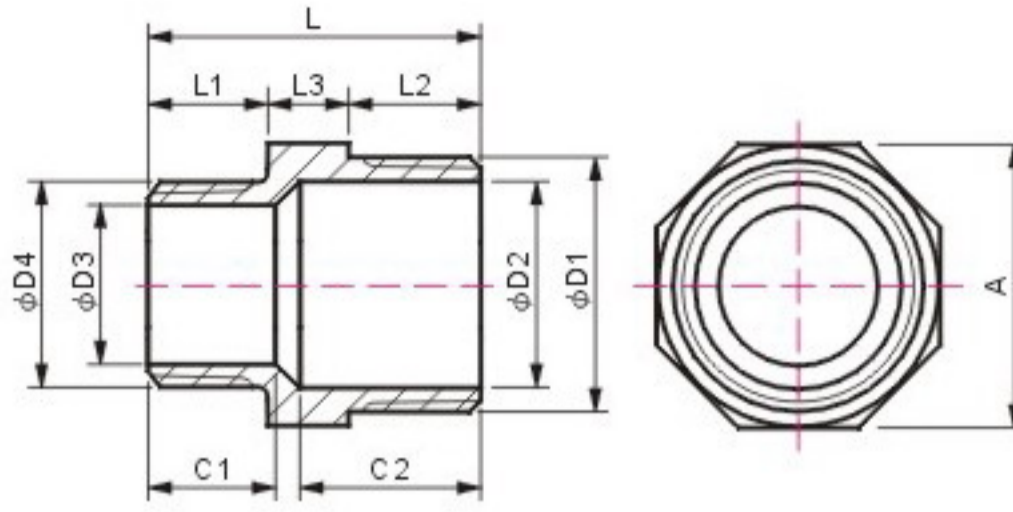
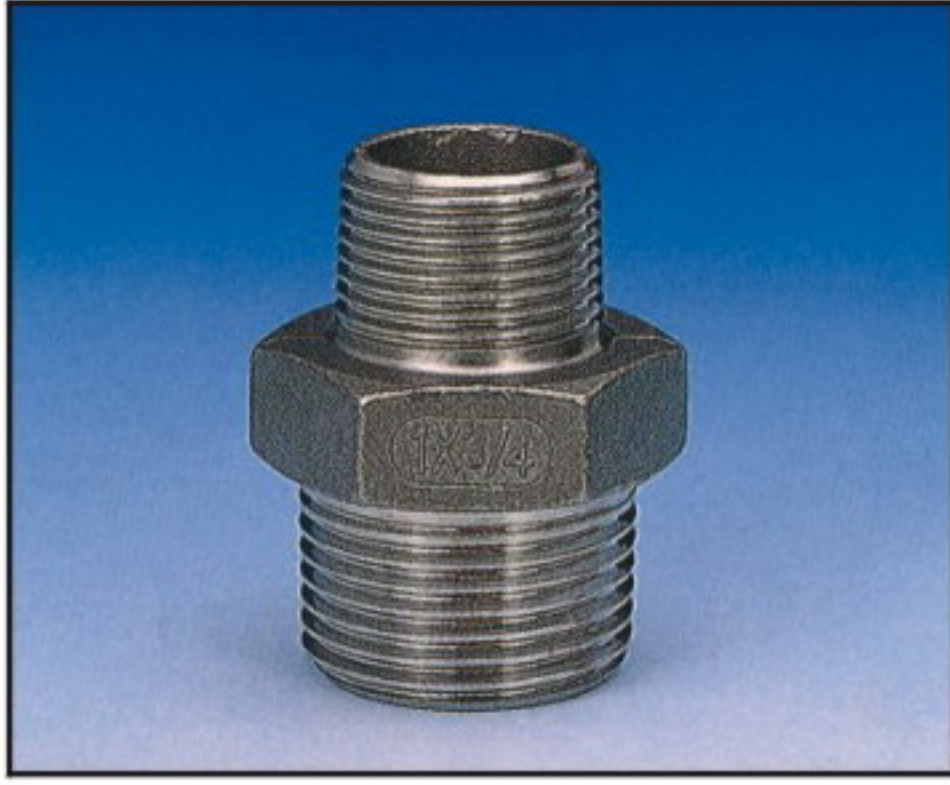
UNIT:mm

SIZE SPEC.	2 1/2" x 1/2"	2 1/2" x 3/4"	2 1/2" x 1"	2 1/2" x 1 1/4"	2 1/2" x 1 1/2"	2 1/2" x 2"	3" x 1/2"	3" x 3/4"	3" x 1"	3" x 1 1/4"	3" x 1 1/2"
A	80.0	80.0	80.0	80.0	80.0	80.0	95.0	95.0	95.0	95.0	95.0
L	38.5	36.5	34.5	31.5	30.0	29.0	39.0	37.0	35.0	32.0	31.0
D1	2 1/2"	2 1/2"	2 1/2"	2 1/2"	2 1/2"	2 1/2"	3"	3"	3"	3"	3"
D2	63.0	63.0	63.0	63.0	63.0	63.0	77.0	77.0	77.0	77.0	77.0
D4	1/2"	3/4"	1"	1 1/4"	1 1/2"	2"	1/2"	3/4"	1"	1 1/4"	1 1/2"
h	49.0	49.0	49.0	49.0	49.0	49.0	50.0	50.0	50.0	50.0	50.0
h1	37.0	37.0	37.0	37.0	37.0	37.0	37.0	37.0	37.0	37.0	37.0
(h2)	12.0	12.0	12.0	12.0	12.0	12.0	13.0	13.0	13.0	13.0	13.0

SIZE SPEC.	3" x 2"	3" x 2 1/2"	4" x 1/2"	4" x 3/4"	4" x 1"	4" x 1 1/4"	4" x 1 1/2"	4" x 2"	4" x 2 1/2"	4" x 3"
A	95.0	95.0	120.0	120.0	120.0	120.0	120.0	120.0	120.0	120.0
L	30.0	26.0	40.0	38.5	36.0	33.5	32.0	31.0	28.0	26.0
D1	3"	3"	4"	4"	4"	4"	4"	4"	4"	4"
D2	77.0	77.0	101.0	101.0	101.0	101.0	101.0	101.0	101.0	101.0
D4	2"	2 1/2"	1/2"	3/4"	1"	1 1/4"	1 1/2"	2"	2 1/2"	3"
h	50.0	50.0	51.0	51.0	51.0	51.0	51.0	51.0	51.0	51.0
h1	37.0	37.0	37.0	37.0	37.0	37.0	37.0	37.0	37.0	37.0
(h2)	13.0	13.0	14.0	14.0	14.0	14.0	14.0	14.0	14.0	14.0

# RNP

# REDUCING HEX NIPPLE



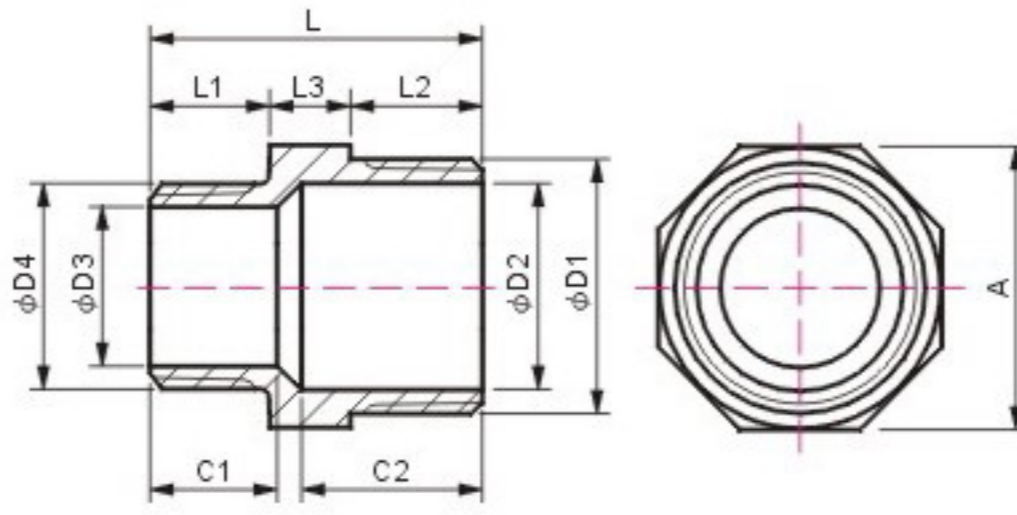
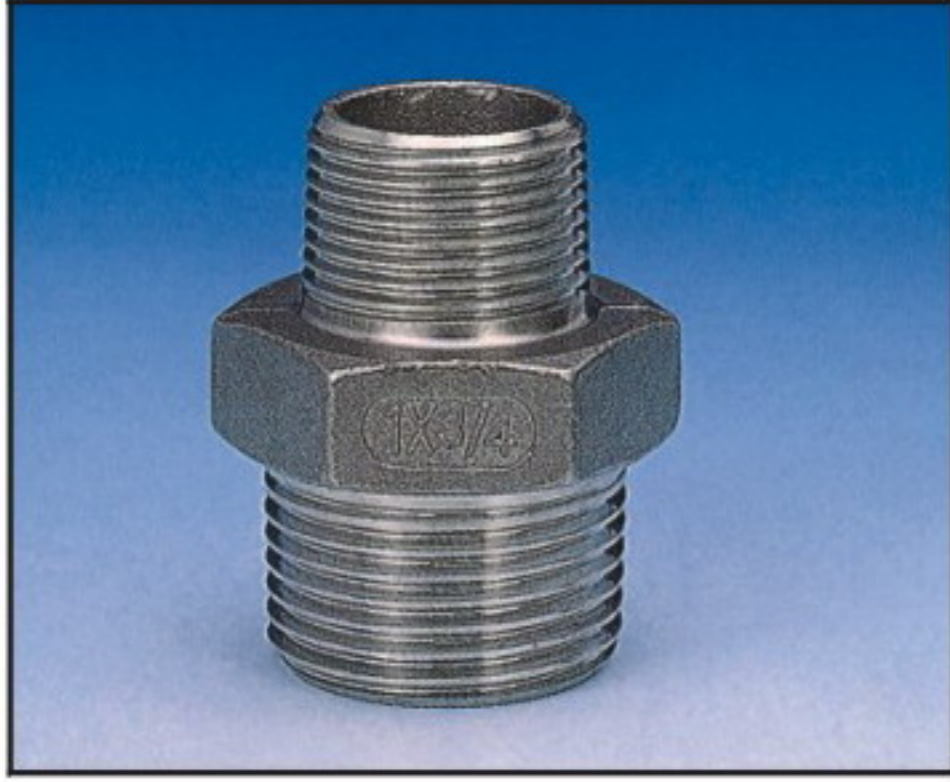
- THREAD: NPT, BSP (BS21), BSPT, DIN.
  - CF8 (304) & CF8M (316).
  - NPT THREADED SHIPPING
- QUANTITY: ±10%.

## DIMENSIONS

UNIT:mm

SIZE SPEC.	1/4"x1/8"	3/8"x1/8"	3/8"x1/4"	1/2"x1/8"	1/2"x1/4"	1/2"x3/8"	3/4"x1/8"	3/4"x1/4"	3/4"x3/8"	3/4"x1/2"	1"x1/4"	1"x3/8"	1"x1/2"
A	17.0	21.0	21.0	26.0	26.0	26.0	32.0	32.0	32.0	32.0	38.0	38.0	38.0
D1	1/4"	3/8"	3/8"	1/2"	1/2"	1/2"	3/4"	3/4"	3/4"	3/4"	1"	1"	1"
D2	8.5	10.5	10.5	14.5	14.5	14.5	20.0	20.0	20.0	20.0	25.5	25.5	25.5
D3	5.0	5.0	8.5	5.0	8.5	10.5	5.0	8.5	10.5	14.5	8.5	10.5	14.5
D4	3.2	3.2	6.4	3.2	6.4	9.5	3.2	6.4	9.5	12.7	6.4	9.5	12.7
C1	12.0	11.0	14.0	11.0	14.0	15.0	12.0	13.0	13.0	17.0	15.0	15.0	18.0
C2	18.0	21.0	20.0	21.0	22.0	22.0	27.0	26.0	25.0	25.0	28.0	28.0	28.0
L	31.5	35.0	35.0	39.0	39.0	39.0	41.0	42.0	42.0	45.0	45.5	45.0	48.0
L1	11.0	12.0	12.0	12.0	12.0	13.0	10.5	11.5	11.5	14.5	13.5	13.0	16.0
L2	12.0	13.0	13.0	17.0	17.0	16.0	19.0	19.0	19.0	19.0	20.0	20.0	20.0
L3	8.5	10.0	10.0	10.0	10.0	10.0	11.5	11.5	11.5	11.5	12.0	12.0	12.0

SIZE SPEC.	1"x3/4"	1 1/4"x1/4"	1 1/4"x3/8"	1 1/4"x1/2"	1 1/4"x3/4"	1 1/4"x1"	1 1/2"x1/4"	1 1/2"x3/8"	1 1/2"x1/2"	1 1/2"x3/4"	1 1/2"x1"	1 1/2"x1 1/4"
A	38.0	46.0	46.0	46.0	46.0	46.0	54.0	54.0	54.0	54.0	54.0	54.0
D1	1"	1 1/4"	1 1/4"	1 1/4"	1 1/4"	1 1/4"	1 1/2"	1 1/2"	1 1/2"	1 1/2"	1 1/2"	1 1/2"
D2	25.5	34.0	34.0	34.0	34.0	34.0	39.0	39.0	39.0	39.0	39.0	39.0
D3	20.0	8.5	10.5	14.5	20.0	25.5	8.5	10.5	14.5	20.0	25.5	34.0
D4	3/4"	1/4"	3/8"	1/2"	3/4"	1"	1/4"	3/8"	1/2"	3/4"	1"	1 1/4"
C1	19.0	15.0	18.0	18.0	19.0	22.0	15.0	15.0	15.0	19.0	22.0	26.0
C2	29.0	29.0	30.0	30.0	32.0	29.0	31.0	31.0	32.0	31.0	29.0	29.0
L	51.0	47.0	49.0	51.0	55.0	54.0	48.0	48.0	50.0	53.0	54.0	58.0
L1	19.0	14.0	14.0	17.0	19.0	20.0	12.5	12.5	14.5	17.5	19.5	22.5
L2	20.0	21.0	23.0	22.0	24.0	22.0	22.5	22.5	22.5	22.5	21.5	22.5
L3	12.0	12.0	12.0	12.0	12.0	12.0	13.0	13.0	13.0	13.0	13.0	13.0



- THREAD: NPT, BSP (BS21), BSPT, DIN.
- CF8 (304) & CF8M (316).
- MADE FROM STAINLESS STEEL WELDED PIPE.

## DIMENSIONS

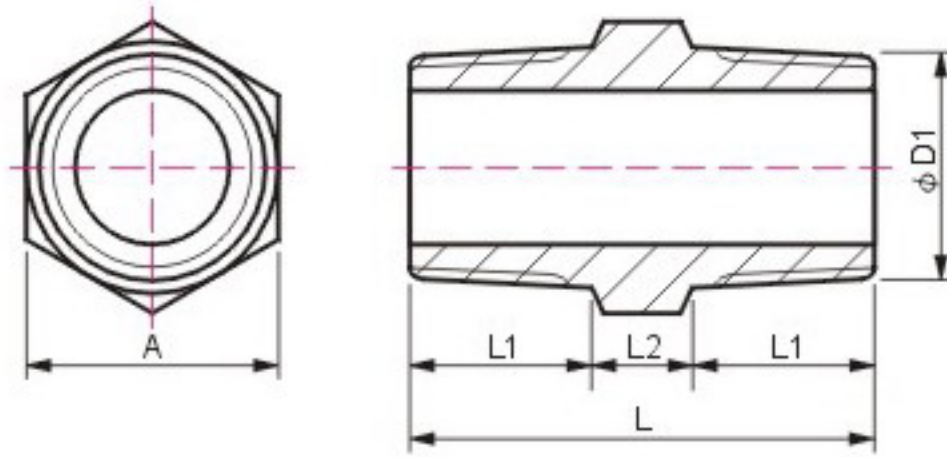
UNIT:mm

SIZE SPEC.	2"×1/4"	2"×3/8"	2"×1/2"	2"×3/4"	2"×1"	2"×1 1/4"	2"×1 1/2"	2 1/2"×1/2"	2 1/2"×3/4"	2 1/2"×1"	2 1/2"×1 1/4"	2 1/2"×1 1/2"	2 1/2"×2"	3"×1/2"
A	63.0	63.0	63.0	63.0	63.0	63.0	63.0	80.0	80.0	80.0	80.0	80.0	80.0	80.0
D1	2"	2"	2"	2"	2"	2"	2"	2 1/2"	2 1/2"	2 1/2"	2 1/2"	2 1/2"	2 1/2"	3"
D2	51.0	51.0	51.0	51.0	51.0	51.0	51.0	64.0	64.0	64.0	64.0	64.0	64.0	76.0
D3	8.5	10.5	14.5	20.0	25.5	34.0	39.0	14.5	20.0	25.5	34.0	39.0	51.0	14.5
D4	1/4"	3/8"	1/2"	3/4"	1"	1 1/4"	1 1/2"	1/2"	3/4"	1"	1 1/4"	1 1/2"	2"	1/2"
C1	16.0	17.0	18.0	20.0	22.0	23.0	24.0	20.0	22.0	24.0	26.0	27.0	28.0	21.0
C2	37.0	37.0	37.0	36.0	36.0	37.0	37.0	39.0	38.0	38.0	37.0	38.0	37.0	42.0
L	55.0	57.0	58.0	60.0	62.0	63.0	65.0	62.0	63.0	65.0	67.0	68.0	69.0	66.0
L1	13.0	15.0	17.0	18.0	20.0	21.0	23.0	16.0	18.0	20.0	22.0	23.0	25.0	16.0
L2	26.0	26.0	25.0	26.0	26.0	26.0	26.0	30.0	29.0	29.0	29.0	29.0	28.0	33.0
L3	16.0	16.0	16.0	16.0	16.0	16.0	16.0	16.0	16.0	16.0	16.0	16.0	16.0	17.0

SIZE SPEC.	3"×3/4"	3"×1"	3"×1 1/4"	3"×1 1/2"	3"×2"	3"×2 1/2"	4"×3/4"	4"×1"	4"×1 1/4"	4"×1 1/2"	4"×2"	4"×2 1/2"	4"×3"
A	95.0	95.0	95.0	95.0	95.0	95.0	120.0	120.0	120.0	120.0	120.0	120.0	120.0
D1	3"	3"	3"	3"	3"	3"	4"	4"	4"	4"	4"	4"	4"
D2	76.0	76.0	76.0	76.0	76.0	76.0	102.0	102.0	102.0	102.0	102.0	102.0	102.0
D3	20.0	25.5	34.0	39.0	51.0	64.0	20.0	25.5	34.0	39.0	51.0	64.0	76.0
D4	3/4"	1"	1 1/4"	1 1/2"	2"	2 1/2"	3/4"	1"	1 1/4"	1 1/2"	2"	2 1/2"	3"
C1	22.0	24.0	26.0	27.0	29.0	31.0	22.0	25.0	25.0	30.0	29.0	29.0	36.0
C2	43.0	43.0	43.0	43.0	43.0	43.0	48.0	48.0	48.0	48.0	48.0	48.0	48.0
L	68.0	70.0	72.0	73.0	75.0	77.0	73.0	75.0	76.0	81.0	80.0	83.0	87.0
L1	18.0	20.0	22.0	23.0	25.0	27.0	18.0	20.0	21.0	26.0	25.0	28.0	32.0
L2	33.0	33.0	33.0	33.0	33.0	33.0	38.0	38.0	38.0	38.0	38.0	38.0	38.0
L3	17.0	17.0	17.0	17.0	17.0	17.0	17.0	17.0	17.0	17.0	17.0	17.0	17.0

# HNP

# HEX NIPPLE



- THREAD: NPT, BSP (BS21), BSPT, DIN.
- CF8 (304) & CF8M (316).

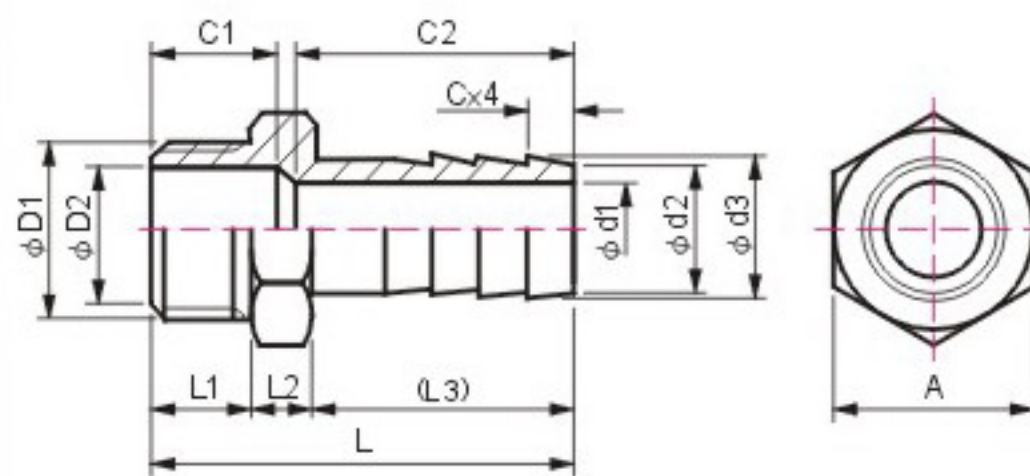
## DIMENSIONS

UNIT:mm

SIZE SPEC.	1/8"	1/4"	3/8"	1/2"	3/4"	1"	1 1/4"	1 1/2"	2"	2 1/2"	3"	4"
A	13.0	15.0	20.0	23.0	29.0	36.0	46.0	51.0	63.0	80.0	95.0	120.0
D1	1/8"	1/4"	3/8"	1/2"	3/4"	1"	1 1/4"	1 1/2"	2"	2 1/2"	3"	4"
L	31.0	33.0	33.0	41.0	44.0	49.0	52.0	52.0	58.0	63.0	69.0	80.0
L1	12.0	13.0	13.0	16.5	18.0	20.5	22.0	22.0	25.0	27.5	30.5	36.0
L2	7.0	7.0	7.0	8.0	8.0	8.0	8.0	8.0	8.0	8.0	8.0	8.0

# ONP

# HOSE NIPPLE



- THREAD: NPT, BSP (BS21), BSPT, DIN.
- CF8 (304) & CF8M (316).
- 2 1/2" NPT THREADED IS NOT AVAILABLE.
- SHIPPING QUANTITY: ±10%, INCLUDING CF8 (304) ALL THREADS & CF8 (316) NPT THREAD.

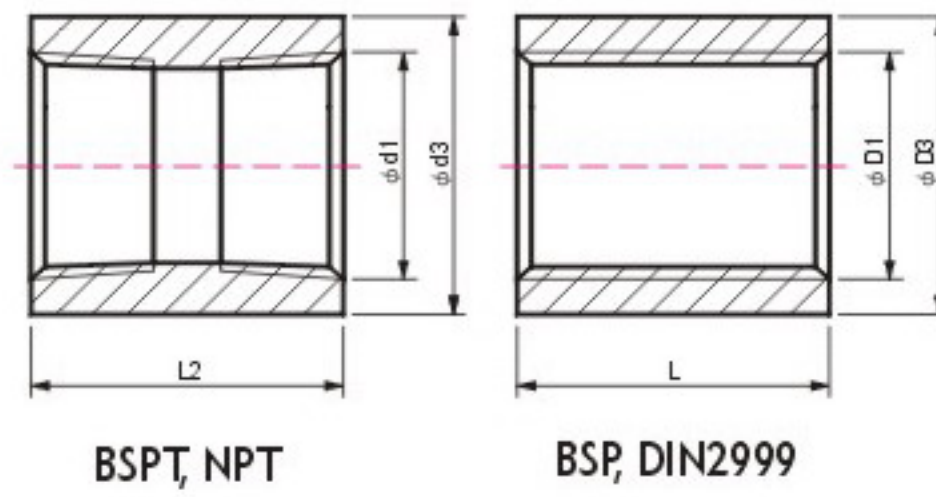
## DIMENSIONS

UNIT:mm

SIZE SPEC.	1/4"	3/8"	1/2"	3/4"	1"	1 1/4"	1 1/2"	2"	2 1/2"	3"	4"
A	16.0	19.0	25.0	31.0	38.0	46.0	52.0	65.0	80.0	95.0	120.0
D1	1/4"	3/8"	1/2"	3/4"	1"	1 1/4"	1 1/2"	2"	2 1/2"	3"	4"
D2	6.5	9.5	14.5	18.0	26.0	35.0	40.0	51.5	67.0	78.0	102.0
C	4.0	5.5	6.5	8.5	9.0	9.5	10.5	13.0	16.0	17.0	21.0
C1	17.0	18.0	19.0	23.0	25.0	28.0	31.0	33.0	37.0	43.0	48.0
C2	28.0	31.0	41.0	48.0	55.0	48.0	58.0	74.0	95.0	100.0	105.0
L	46.5	51.5	62.5	72.5	82.0	87.0	92.5	109.5	136.0	147.0	158.0
L1	13.0	13.0	15.5	18.0	19.5	22.5	23.0	24.5	27.0	33.0	36.0
L2	10.0	10.0	10.0	11.5	12.5	12.5	13.5	15.0	16.0	17.0	18.0
(L3)	23.5	28.5	37.0	43.0	50.0	53.0	56.0	70.0	93.0	97.0	104.0
d1	5.0	6.5	9.5	14.5	20.0	27.0	33.0	45.0	58.0	70.0	90.0
d2	8.0	10.0	13.5	19.5	25.5	32.5	38.5	50.5	62.0	75.0	101.0
d3	9.0	11.0	14.5	20.5	26.5	34.0	40.5	52.5	64.0	78.0	104.0

# FCP

## COUPLINGS/SOCKETS



- THREAD: NPT, BSP (BS21), BSPT, DIN.
- CF8 (304) & CF8M (316).
- MADE FROM STAINLESS STEEL WELDED PIPE.

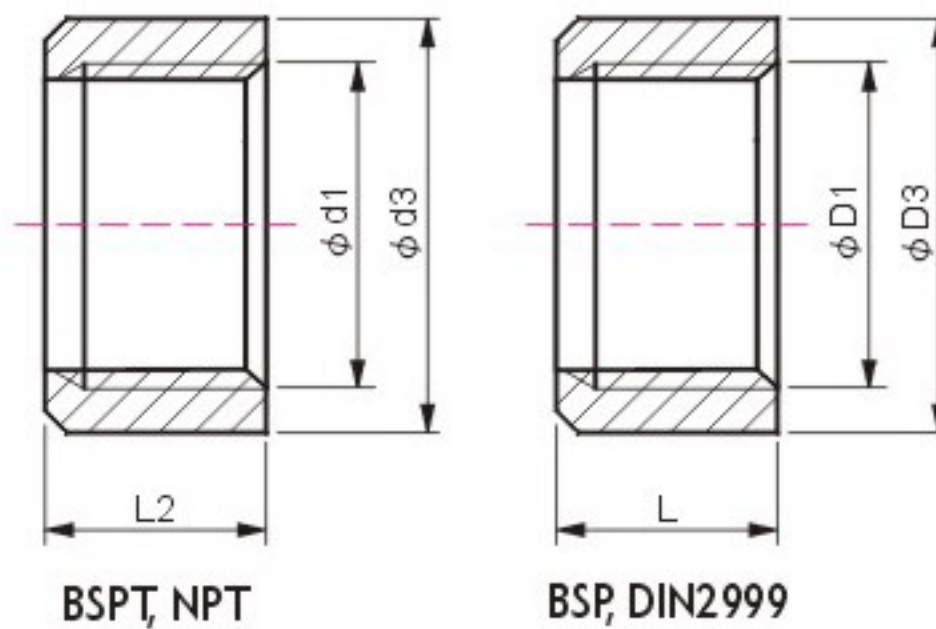
### DIMENSIONS

UNIT:mm

SIZE SPEC.	1/8"	1/4"	3/8"	1/2"	3/4"	1"	1 1/4"	1 1/2"	2"	2 1/2"	3"	4"	
d1	1/8"	1/4"	3/8"	1/2"	3/4"	1"	1 1/4"	1 1/2"	2"	2 1/2"	3"	4"	
BSPT, NPT	d3	14.0	18.5	21.5	26.5	32.0	39.5	48.5	54.5	66.5	84.0	100.0	129.0
	L2	20.0	27.0	28.0	36.0	39.0	43.0	48.0	48.0	56.0	65.0	71.0	83.0
D1	1/8"	1/4"	3/8"	1/2"	3/4"	1"	1 1/4"	1 1/2"	2"	2 1/2"	3"	4"	
BSP, DIN2999	D3	14.0	18.5	21.5	26.5	32.0	39.5	48.5	54.5	66.5	82.0	95.0	122.0
	L	20.0	25.0	26.0	34.0	36.0	43.0	48.0	48.0	56.0	65.0	71.0	83.0

# HCP

## HALF COUPLINGS/HALF SOCKETS

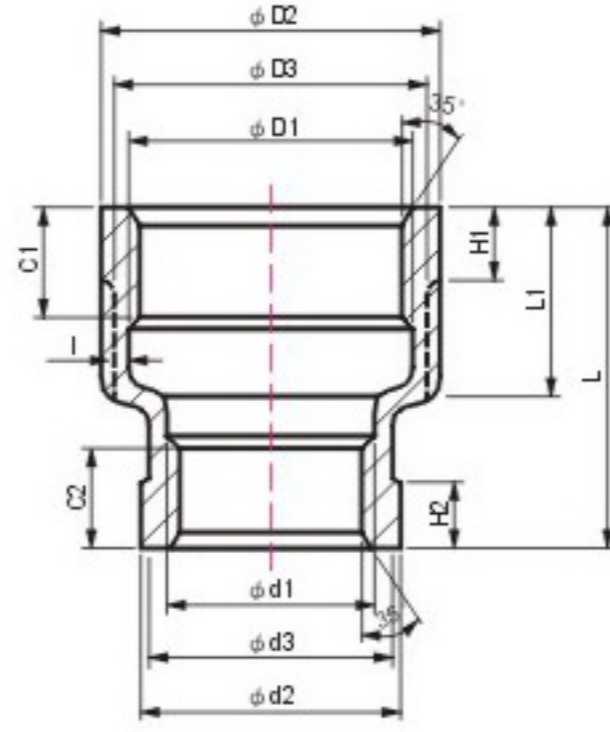


- THREAD: NPT, BSP (BS21), BSPT, DIN.
- CF8 (304) & CF8M (316).
- MADE FROM STAINLESS STEEL WELDED PIPE.

### DIMENSIONS

UNIT:mm

SIZE SPEC.	1/8"	1/4"	3/8"	1/2"	3/4"	1"	1 1/4"	1 1/2"	2"	2 1/2"	3"	4"	
d1	1/8"	1/4"	3/8"	1/2"	3/4"	1"	1 1/4"	1 1/2"	2"	2 1/2"	3"	4"	
BSPT, NPT	d3	14.0	18.5	21.5	26.5	32.0	39.5	48.5	54.5	66.5	84.0	100.0	129.0
	L2	11.0	13.0	14.0	18.0	20.0	21.0	24.0	24.0	28.0	33.0	36.0	42.0
D1	1/8"	1/4"	3/8"	1/2"	3/4"	1"	1 1/4"	1 1/2"	2"	2 1/2"	3"	4"	
BSP, DIN2999	D3	14.0	18.5	21.5	26.5	32.0	39.5	48.5	54.5	66.5	82.0	95.0	122.0
	L	11.0	13.0	12.0	15.0	17.0	19.0	22.0	22.0	26.0	30.0	33.0	40.0



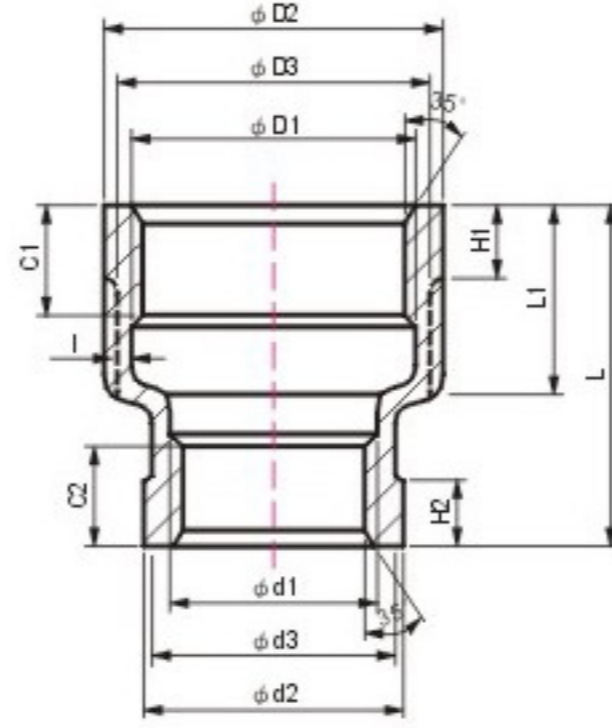
- THREAD: NPT, BSP (BS21), BSPT, DIN.
- CF8 (304) & CF8M (316).

## DIMENSIONS

UNIT:mm

SIZE SPEC.	1/4"x1/8"	3/8"x1/8"	3/8"x1/4"	1/2"x1/8"	1/2"x1/4"	1/2"x3/8"	3/4"x1/8"	3/4"x1/4"	3/4"x3/8"	3/4"x1/2"	1"x1/8"	1"x1/4"	1"x3/8"	1"x1/2"	1"x3/4"
D1	1/4"	3/8"	3/8"	1/2"	1/2"	1/2"	3/4"	3/4"	3/4"	3/4"	1"	1"	1"	1"	1"
D2	20.0	25.5	25.5	30.0	30.0	30.0	36.0	36.0	36.0	36.0	45.0	45.0	45.0	45.0	45.0
D3	18.0	23.0	23.0	28.0	28.0	28.0	33.0	33.0	33.0	33.0	42.0	42.0	42.0	42.0	42.0
C1	6.2	9.4	9.7	10.0	10.0	10.0	10.0	10.0	10.0	10.0	14.0	14.0	14.0	14.0	14.0
H1	6.0	7.0	7.0	8.0	8.0	8.0	9.0	9.0	9.0	9.0	9.0	11.0	11.0	11.0	11.0
d1	1/8"	1/8"	1/4"	1/8"	1/4"	3/8"	1/8"	1/4"	3/8"	1/2"	1/8"	1/4"	3/8"	1/2"	3/4"
d2	16.0	16.0	20.0	16.0	20.0	25.5	16.0	20.0	25.5	30.0	16.0	20.0	25.5	30.0	36.0
d3	14.0	14.0	18.0	14.0	18.0	23.0	14.0	18.0	23.0	28.0	14.0	18.0	23.0	28.0	33.0
C2	11.0	12.0	13.0	9.0	15.0	10.0	13.0	11.0	15.0	15.0	12.0	12.0	13.0	14.0	17.0
H2	6.0	6.0	6.0	7.0	6.0	7.0	7.0	7.0	7.0	8.0	7.0	7.0	7.0	8.0	11.0
L1	16.0	23.0	23.0	24.0	24.0	24.0	22.0	25.0	25.0	25.0	26.0	28.0	28.0	28.0	28.0
L	28.5	41.0	41.0	45.0	45.0	45.0	45.0	45.0	45.0	45.0	50.0	50.0	50.0	50.0	50.0
I	3.0	3.0	3.0	2.5	2.5	2.5	3.0	3.0	3.0	3.0	3.0	3.0	3.0	3.0	3.0





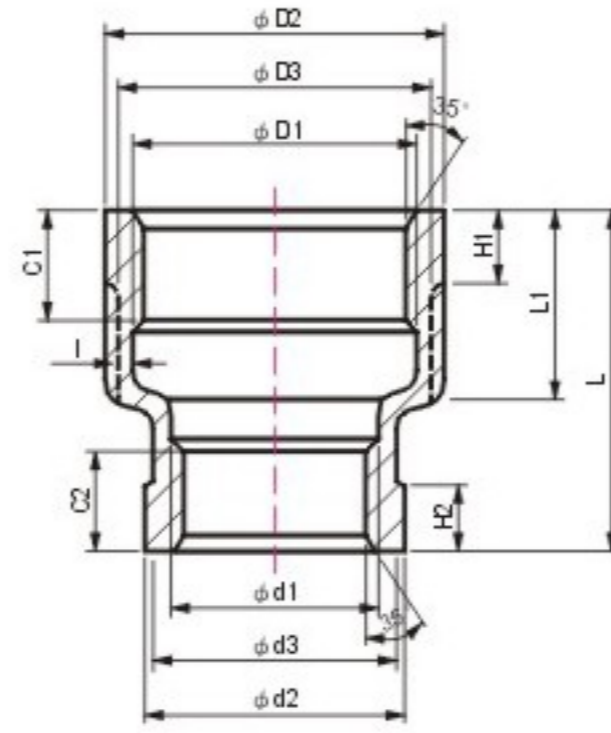
- THREAD: NPT, BSP (BS21), BSPT, DIN.
- CF8 (304) & CF8M (316).

## DIMENSIONS

UNIT:mm

SIZE SPEC.	1 1/4" x 1/4"	1 1/4" x 3/8"	1 1/4" x 1/2"	1 1/4" x 3/4"	1 1/4" x 1"	1 1/2" x 1/4"	1 1/2" x 3/8"	1 1/2" x 1/2"	1 1/2" x 3/4"
D1	1 1/4"	1 1/4"	1 1/4"	1 1/4"	1 1/4"	1 1/2"	1 1/2"	1 1/2"	1 1/2"
D2	53.0	53.0	53.0	53.0	53.0	60.0	60.0	60.0	60.0
D3	50.0	50.0	50.0	50.0	50.0	56.5	56.5	56.5	56.5
C1	18.0	18.0	18.0	18.0	18.0	18.0	18.0	18.0	18.0
H1	11.0	11.0	11.0	12.0	12.0	12.0	12.0	12.0	12.0
d1	1/4"	3/8"	1/2"	3/4"	1"	1/4"	3/8"	1/2"	3/4"
d2	20.0	25.5	30.0	36.0	45.0	20.0	25.5	30.0	36.0
d3	18.0	23.0	28.0	33.0	41.0	18.0	23.0	28.0	33.0
C2	15.0	12.0	13.0	13.0	18.0	18.0	18.0	17.0	19.0
H2	6.0	8.0	10.0	10.0	11.0	6.0	8.0	9.0	10.0
L1	29.0	29.0	29.0	29.0	29.0	31.0	31.0	31.0	31.0
L	50.0	50.0	50.0	50.0	50.0	57.0	57.0	57.0	57.0
l	3.5	3.5	3.5	3.5	3.5	3.5	3.5	3.5	3.5

SIZE SPEC.	1 1/2" x 1"	1 1/2" x 1 1/4"	2" x 1/4"	2" x 3/8"	2" x 1/2"	2" x 3/4"	2" x 1"	2" x 1 1/4"	2" x 1 1/2"
D1	38.1	38.1	50.8	50.8	50.8	50.8	50.8	50.8	50.8
D2	60.0	60.0	74.0	74.0	74.0	74.0	74.0	74.0	74.0
D3	56.5	56.5	70.0	70.0	70.0	70.0	70.0	70.0	70.0
C1	18.0	18.0	18.0	18.0	18.0	18.0	18.0	18.0	18.0
H1	12.0	12.0	13.0	13.0	13.0	13.0	13.0	13.0	13.0
d1	1"	1 1/4"	1/4"	3/8"	1/2"	3/4"	1"	1 1/4"	1 1/2"
d2	45.0	53.0	20.0	25.5	30.0	36.0	45.0	53.0	60.0
d3	41.0	50.0	18.0	23.0	28.0	33.0	41.0	50.0	56.5
C2	17.0	20.0	16.0	13.0	15.0	15.0	17.0	18.0	20.0
H2	11.0	12.0	5.0	8.0	9.0	10.0	11.0	12.0	12.0
L1	31.0	31.0	38.0	38.0	38.0	38.0	38.0	38.0	38.0
L	57.0	57.0	67.0	67.0	67.0	67.0	67.0	67.0	67.0
l	3.5	3.5	4.0	4.0	4.0	4.0	4.0	4.0	4.0



- THREAD: NPT, BSP (BS21), BSPT, DIN.
- CF8 (304) & CF8M (316).
- CF8 (304) 2 1/2" x 3/4", 3" x 1/2", 3" x 3/4" ARE NOT AVAILABLE.

### DIMENSIONS

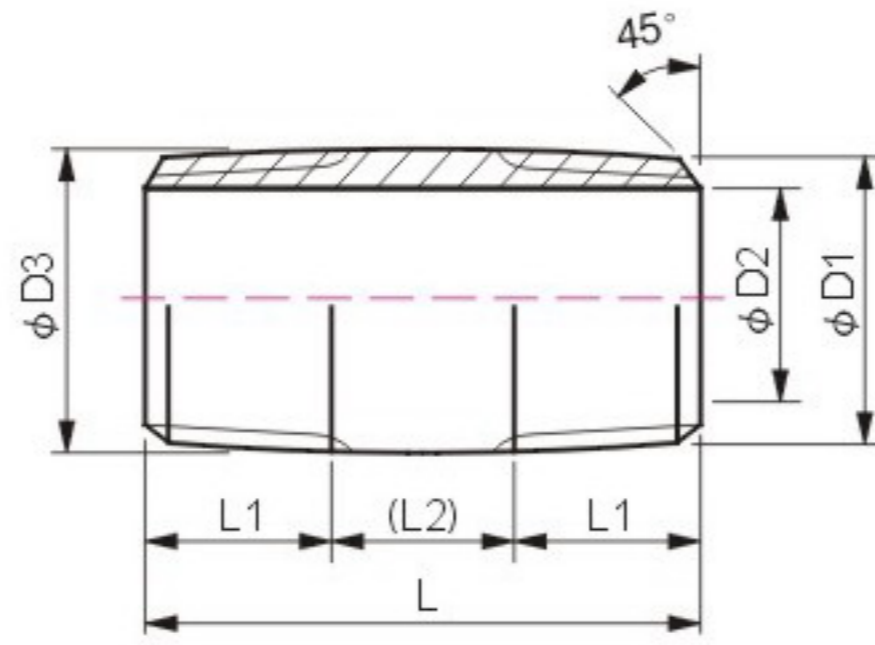
UNIT:mm

SIZE SPEC.	2 1/2" x 3/4"	2 1/2" x 1"	2 1/2" x 1 1/4"	2 1/2" x 1 1/2"	2 1/2" x 2"	3" x 1/2"	3" x 3/4"	3" x 1"	3" x 1 1/4"
D1	2 1/2"	2 1/2"	2 1/2"	2 1/2"	2 1/2"	—	3"	3"	3"
D2	90.0	90.0	90.0	90.0	90.0	—	109.0	109.0	109.0
D3	86.0	86.0	86.0	86.0	86.0	—	104.0	104.0	104.0
C1	23.0	23.0	23.0	23.0	23.0	—	24.0	24.0	24.0
H1	14.0	14.0	14.0	14.0	14.0	—	15.0	15.0	15.0
d1	3/4"	1"	1 1/4"	1 1/2"	2"	—	3/4"	1"	1 1/4"
d2	36.0	45.0	53.0	60.0	74.0	—	36.0	45.0	53.0
d3	33.0	41.0	50.0	56.5	70.0	—	33.0	41.0	50.0
C2	19.0	19.0	22.0	23.0	22.0	—	14.0	16.0	19.0
H2	9.0	11.0	12.0	12.0	14.0	—	10.0	11.0	12.0
L1	43.0	43.0	43.0	43.0	43.0	—	49.0	49.0	49.0
L	76.0	76.0	76.0	76.0	76.0	—	85.0	84.0	84.0
I	6.5	6.5	6.5	6.5	6.5	—	6.5	6.5	6.5

SIZE SPEC.	3" x 1 1/2"	3" x 2"	3" x 2 1/2"	4" x 1"	4" x 1 1/4"	4" x 1 1/2"	4" x 2"	4" x 2 1/2"	4" x 3"
D1	3"	3"	3"	4"	4"	4"	4"	4"	4"
D2	109.0	109.0	109.0	138.0	138.0	138.0	138.0	138.0	138.0
D3	104.0	104.0	104.0	132.0	132.0	132.0	132.0	132.0	132.0
C1	24.0	24.0	24.0	25.0	25.0	25.0	25.0	25.0	25.0
H1	15.0	15.0	15.0	16.0	16.0	16.0	16.0	16.0	16.0
d1	1 1/2"	2"	2 1/2"	1"	1 1/4"	1 1/2"	2"	2 1/2"	3"
d2	60.0	74.0	90.0	45.0	53.0	60.0	74.0	90.0	109.0
d3	56.5	70.0	86.0	41.0	50.0	56.5	70.0	86.0	104.0
C2	20.0	20.0	26.0	24.0	22.0	24.0	24.0	29.0	25.0
H2	13.0	13.0	14.0	11.0	12.0	13.0	14.0	15.0	16.0
L1	49.0	43.0	49.0	55.0	53.0	53.0	53.0	53.0	55.0
L	85.0	79.0	83.0	97.0	95.0	95.0	97.0	96.0	98.0
I	6.5	6.5	6.5	6.5	6.5	6.5	6.5	6.5	6.5

# BNP

## BARREL NIPPLE



- THREAD: NPT, BSP (BS21), BSPT, DIN.
- CF8 (304) & CF8M (316).
- MADE FROM STAINLESS STEEL WELDED PIPE.

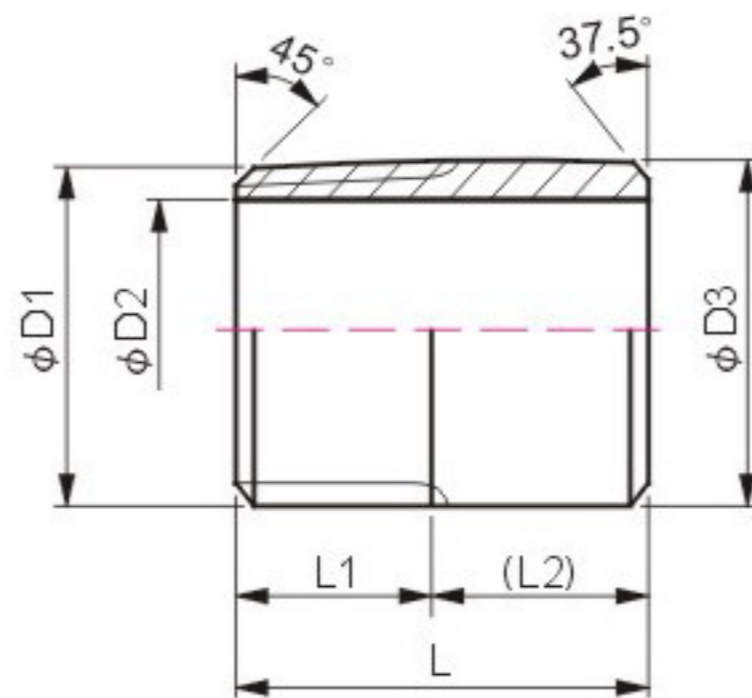
### DIMENSIONS

UNIT:mm

SIZE SPEC.	1/8"	1/4"	3/8"	1/2"	3/4"	1"	1 1/4"	1 1/2"	2"	2 1/2"	3"	4"
D1	1/8"	1/4"	3/8"	1/2"	3/4"	1"	1 1/4"	1 1/2"	2"	2 1/2"	3"	4"
D2	6.0	9.0	12.0	16.0	21.0	27.0	35.0	41.0	53.0	66.0	79.0	103.0
D3	10.0	13.5	17.0	21.0	27.0	33.5	42.0	48.0	60.5	76.0	89.0	114.0
L	40.0	40.0	40.0	60.0	60.0	60.0	80.0	80.0	100.0	100.0	120.0	120.0
L1	10.5	12.0	12.0	17.0	17.0	19.0	22.0	22.0	26.0	26.0	30.0	35.0
(L2)	19.0	16.0	16.0	26.0	26.0	22.0	36.0	36.0	48.0	48.0	60.0	50.0

# WNP

## WELDING NIPPLE



- THREAD: NPT, BSP (BS21), BSPT, DIN.
- CF8 (304) & CF8M (316).
- MADE FROM STAINLESS STEEL WELDED PIPE.

### DIMENSIONS

UNIT:mm

SIZE SPEC.	1/8"	1/4"	3/8"	1/2"	3/4"	1"	1 1/4"	1 1/2"	2"	2 1/2"	3"	4"
D1	1/8"	1/4"	3/8"	1/2"	3/4"	1"	1 1/4"	1 1/2"	2"	2 1/2"	3"	4"
D2	6.0	9.0	12.0	16.0	21.0	27.0	35.0	41.0	53.0	66.0	79.0	103.0
D3	10.0	13.5	17.0	21.0	27.0	33.5	42.0	48.0	60.5	76.0	89.0	114.0
L	30.0	30.0	30.0	35.0	40.0	40.0	50.0	50.0	50.0	60.0	70.0	80.0
L1	10.0	12.0	12.0	17.0	19.0	19.0	22.0	22.0	25.0	25.0	30.0	35.0
(L2)	20.0	18.0	18.0	18.0	21.0	21.0	28.0	28.0	25.0	35.0	40.0	45.0

# STANDARD PACKING QUANTITY FOR EACH CAPTON

UNIT: PCS

ITEM	1/8"	1/4"	3/8"	1/2"	3/4"	1"	1 1/4"	1 1/2"	2"	2 1/2"	3"	4"
90° ELBOWS BANDED EQUAL (9LB)	400	400	250	125	75	40	24	18	10	5	3	1
TEES BANDED EQUAL (TEB)	* 200	250	125	75	50	30	16	14	8	4	2	1
45° ELBOWS BANDED EQUAL (4LB)	550	350	250	125	75	50	27	20	12	6	4	2
STREET ELBOWS 90° BANDED (SLB)	600	400	250	150	75	40	25	18	10	6	4	1
CROSSES BANDED EQUAL (+ LB)	250	150	100	50	40	20	14	12	6	3	2	1
UNIONS F/F (UCF)	200	175	125	75	50	30	22	18	10	6	4	2
UNIONS M/F (UCM)	200	150	100	80	50	30	18	15	8	4	2	1
UNIONS B/W (UCB)	—	175	125	75	50	30	22	18	10	6	4	—
ROUND CAPS (RCB)	1,000	600	400	250	150	100	60	50	30	18	12	6
SQUARE HEAD PLUGS (SPG)	* 900	* 800	600	600	250	175	100	60	60	24	20	8
HEX HEAD PLUGS (HPG)	1,000	750	600	350	200	130	70	60	30	18	12	5
HEX CAPS (HCB)	1,000	600	400	250	150	100	60	50	30	18	12	6
HEX NUTS (HNT)	1,000	1,000	600	500	300	200	150	120	50	40	25	15
HEX BUSHINGS (HBU)	—	900	650	350	225	125	90	64	36	24	12	6
REDUCING HEX NIPPLE (RNP)	—	500	350	250	150	80	60	36	18	12	6	4
HEX NIPPLE (HNP)	* 600	500	350	200	125	70	60	36	18	12	6	4
HOSE NIPPLE (ONP)	—	500	350	200	100	60	50	30	16	9	5	2
COUPLINGS/SOCKETS (FCP)	800	500	400	200	125	75	60	48	24	12	8	4
HALF COUPLINGS/HALF SOCKETS (HCP)	1,200	1,000	800	400	250	150	120	90	48	24	16	8
REDUCING COUPLINGS (RSB)	—	500	250	150	100	50	36	30	18	8	8	3
BARREL NIPPLE (BNP)	* 500	600	400	175	125	80	50	30	18	12	5	3
WELDING NIPPLE (WNP)	* 600	600	500	300	175	120	80	60	36	18	10	6

SIZE OF CARTON: 1). 24.5cm x 17.0cm x 22.0cm

\* 2). 24.5cm x 17.0cm x 12.0cm

# WEIGHT LIST

UNIT:KG/PC

ITEM	SIZE	1/8"	1/4"	3/8"	1/2"	3/4"	1"	1 1/4"	1 1/2"	2"	2 1/2"	3"	4"
90° ELBOWS BANDED EQUAL (9LB)		0.029	0.035	0.059	0.104	0.143	0.268	0.380	0.512	0.754	1.692	2.325	3.433
TEES BANDED EQUAL (TEB)		0.046	0.054	0.085	0.144	0.210	0.360	0.500	0.700	1.010	2.408	3.318	4.810
45° ELBOWS BANDED EQUAL (4LB)		0.036	0.037	0.054	0.177	0.168	0.255	0.321	0.433	0.703	1.561	2.022	2.965
STREET ELBOWS 90° BANDED (SLB)		0.023	0.039	0.061	0.105	0.158	0.262	0.401	0.500	0.817	1.684	2.060	3.450
CEOSSES BANDED EQUAL (+LB)		0.057	0.083	0.167	0.220	0.325	0.540	0.778	0.992	1.550	2.930	3.600	5.880
UNIONS F/F (UCF)		0.125	0.111	0.177	0.220	0.332	0.503	0.704	0.871	1.386	2.067	2.979	4.817
UNIONS M/F (UCM)		0.138	0.129	0.207	0.263	0.400	0.567	0.798	1.017	1.509	2.353	3.486	5.398
UNIONS B/W (UCB)		—	0.111	0.177	0.220	0.332	0.503	0.704	0.871	1.386	2.067	2.979	—
ROUND CAPS (RCB)		0.016	0.030	0.054	0.073	0.101	0.171	0.239	0.310	0.462	0.795	1.243	2.074
SQUARE HEAD PLUGS (SPG)		0.011	0.017	0.029	0.031	0.070	0.095	0.152	0.208	0.312	0.587	0.714	1.100
HEX HEAD PLUGS (HPG)		0.016	0.025	0.034	0.048	0.088	0.116	0.188	0.265	0.395	0.759	1.030	1.662
HEX CAPS (HCB)		0.019	0.030	0.033	0.073	0.100	0.170	0.240	0.380	0.469	0.850	1.235	2.090
HEX NUTS (HNT)		0.016	0.021	0.030	0.043	0.050	0.095	0.136	0.154	0.252	0.514	0.547	0.920
HEX BUSHINGS (HBU)		—	0.022	0.036	0.059	0.091	0.153	0.216	0.293	0.456	0.827	1.230	2.168
REDUCING HEX NIPPLE (RNP)		—	0.027	0.048	0.076	0.115	0.170	0.255	0.359	0.496	0.848	1.276	1.946
HEX NIPPLE (HNP)		0.018	0.028	0.047	0.080	0.109	0.174	0.247	0.371	0.533	1.141	1.366	1.899
HOSE NIPPLE (ONP)		—	0.036	0.053	0.099	0.173	0.240	0.324	0.455	0.779	1.280	1.801	3.404
COUPLINGS/SOCKETS (FCP)	NPT, BSPT	0.013	0.031	0.037	0.072	0.100	0.159	0.232	0.254	0.371	0.918	1.223	2.352
	BSP, DIN2999	0.013	0.028	0.033	0.065	0.084	0.145	0.204	0.242	0.350	0.506	0.672	1.228
HALF COUPLINGS/ HALF SOCKETS (HCP)	NPT, BSPT	0.008	0.015	0.018	0.037	0.050	0.073	0.108	0.125	0.177	0.451	0.623	1.138
	BSP, DIN2999	0.008	0.012	0.015	0.028	0.038	0.059	0.091	0.108	0.158	0.233	0.305	0.560
REDUCING COUPLINGS (RSB)		—	0.030	0.075	0.104	0.140	0.235	0.339	0.434	0.660	1.134	1.735	2.990
BARREL NIPPLE (BNP)		0.013	0.019	0.025	0.058	0.078	0.118	0.213	0.243	0.394	0.799	1.100	1.403
WELDING NIPPLE (WNP)		0.011	0.015	0.020	0.036	0.055	0.084	0.135	0.161	0.203	0.453	0.622	1.022



**TA CHEN**  
International Corporation

**TA CHEN STAINLESS PIPE CO., LTD.**

**TAINAN HEAD OFFICE & FACTORIES:**

No .125, HsinTien 2nd Steet, Hsin-Tien,  
Jeng-Teh, Tainan, Taiwan, R.O.C.  
Tel:(06) 2701756~8, 2793254, 2703170  
Fax: 886-6-2701382, 2791154

**U.S.A. OFFICE:**

5855 Obispo Ave.,  
Long Beach, CA. 90805  
Tel:(562) 808-8000  
Fax:(562) 808-8101

**TAIPEI SALES OFFICE:**

5F-3, No .36 Lane 48, Sec.3,  
Nanking East Road, Taipei, Taiwan, R.O.C.  
Tel:(02) 2506-7067, 2506-7094  
Fax:(02) 2501-3725, 2501-3783

2008 FEB.