

**O.S.&Y. RESILIENT WEDGE
GATE VALVES
FLANGED ENDS**



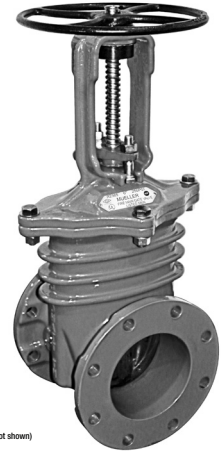
UL / FM

FIRE PROTECTION PRODUCTS

3-11

R-2365-6: O.S.&Y. RESILIENT WEDGE GATE VALVE WITH FLANGE ENDS

- 2-1/2", 3", 4", 6" AND 8" SIZES
- MEETS OR EXCEEDS ALL APPLICABLE REQUIREMENTS OF UL 262 AND FM 1120/1130 SPECIFICATIONS AND COMPLIES WITH NSF-61
- DUCTILE IRON BODY WITH MUELLER® PRO-GARD™ FUSION EPOXY COATED INTERIOR & EXTERIOR SURFACES
- OUTSIDE SCREW AND YOKE (O.S.&Y.)
- FLANGED END DIMENSIONS AND DRILLING
- RUBBER ENCAPSULATED IRON WEDGE
- ADJUSTABLE PACKING
- HANDWHEEL – OPEN LEFT OR OPEN RIGHT
- 250 PSIG (1379KPA) MAXIMUM WORKING PRESSURE - 500 PSIG (2758 KPA) STATIC TEST
- EPOXY COATING MEETS OR EXCEEDS ANSI/AWWA C550 AND COMPLIES WITH NSF-61

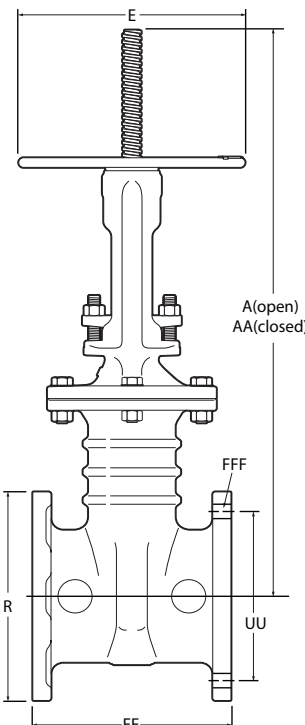
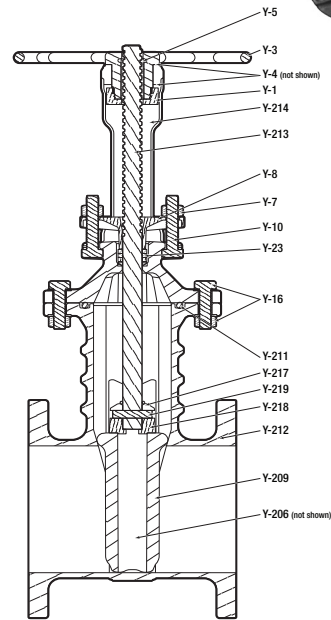


Options

- STAINLESS STEEL FASTENERS: TYPE 316
- PN10/PN16 DRILLING
- STAINLESS STEEL STEM: TYPE 304 & 316

PARTS LIST

Catalog Part No.	Description	Material	Material Standard
Y-1	Retaining Nut	Carbon Steel E Coated	ASTM A36
Y-3	Hand Wheel	Ductile Iron	ASTM A536 Grade 65-45-12
Y-4	Washer	Brass	ASTM B36
Y-5	Bush Nut	Brass	ASTM B16
Y-7	Gland Nut	Silicon Bronze	ASTM B98
Y-8	Packing Gland	Ductile Iron	ASTM A536 Grade 65-45-12
Y-10	Gland Bolt	Stainless Steel	Type 304
Y-16	Bonnet Bolts & Nuts	Stainless Steel	Type 304
Y-23	Stem Packing	Lubricated Flax	
Y-206	Guide Cap Bearings	Acetyl	
Y-209	Wedge, Rubber Encapsulated	Cast Iron**	ASTM A126 CL.B
Y-211	Bonnet O-ring	SBR	ASTM D2000
Y-212	Body	Ductile Iron	ASTM A536 Grade 65-45-12
Y-213	Stem	Stainless Steel	Type 431
Y-214	Bonnet & Yoke	Ductile Iron	ASTM A536 Grade 65-45-12
Y-217	O-ring	Nitrile	ASTM D2000
Y-218	Disc Nut	Ductile Iron E Coated	ASTM A536 Grade 65-45-12
Y-219	Stem Nut Pin	Stainless Steel	Type 303



DIMENSIONS

Dimension*	Size				
	2-1/2"	3"	4"	6"	8"
A	20.33"	20.16"	23.63"	30.00"	37.37"
AA	16.53"	16.32"	18.94"	23.22"	28.60"
E	7.00"	7.00"	10.00"	12.00"	14.00"
R	7.00"	7.50"	9.00"	11.00"	13.50"
FF	7.50"	8.00"	9.00"	10.50"	11.50"
UU	5.50"	6.00"	7.50"	9.50"	11.75"
FFF (number and size of holes)	4--.75"	4--.75"	8--.75"	8--.88"	8--.88"
Turns to open	11	11	14	20.5	26.5
Weight (lbs.)*	50	52	76	119	182

See page B-1-22 for ordering instructions.

NOTE: Flanged ends have 125lb. American Standard End Flange Drilling, ANSI B16.1.

*All dimensions are in inches. All weights are in pounds and are approximate.

** Fully encapsulated in molded rubber with no iron exposed.

Shaded area indicates change

SWING CHECK VALVES



UL / FM

FIRE PROTECTION PRODUCTS

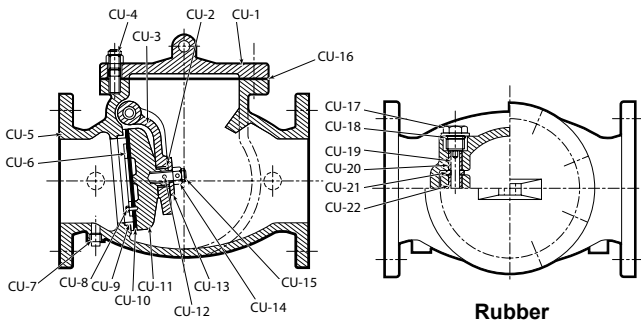


A-2120-6BB Flange Ends - Bronze Disc Ring and Bronze Seat Ring
A-2122-6B1 Flange Ends - Rubber Disc Facing and Bronze Seat Ring 2-1/2" - 12" 200 psi (1375 kPa/13 barg) Working Pressure - 400 psi (2750 kPa/27 barg) Test Pressure

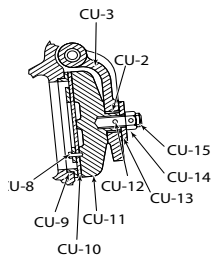
- Listed by Underwriter Laboratories, Inc. and approved by Factory Mutual Research Corporation.
- ANSI B16.1 CL125 Flanges

PARTS LIST

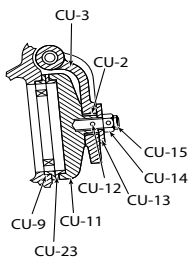
Catalog Parts Numbers	Description	Material	Material Standard
CU-1	Cover	Cast Iron	ASTM 126 Class B
CU-2	Arm Disc Bushing	Bronze	ASTM B62
CU-3	Arm	Cast Iron	ASTM 126 Class B
CU-4	Cover Stud & Nut	Zinc Coated Steel	ASTM A307 Grade B
CU-5	Body	Cast Iron	ASTM 126 Class B
CU-6	Seat Holder	Bronze	ASTM B62
CU-7	Plug (B)	Malleable Iron	ASTM 47
CU-8	Disc Seat Bolt	Stainless Steel	ASTM A276 Type 304
CU-9	Body Seat Ring	Bronze	ASTM B62
CU-10	Disc Seat Ring	Rubber	Buna D2000 BK707
CU-11	Disc	Cast Iron	ASTM 126 Class B
CU-12	Pin	Stainless Steel	ASTM 276 Type 304
CU-13	Washer	Brass	ASTM B21
CU-14	Disc Nut	Brass	ASTM B21
CU-15	Disc Stud	Brass	ASTM B21
CU-16	Cover Gasket	Rubber	Buna D2000 BK 707
CU-17	Plug	Brass	ASTM B21
CU-18	O-Ring	Rubber	Buna N D2000 BK 707
CU-19	Hinge Pin	Stainless Steel	ASTM 276 Type 304
CU-20	Body Bushing	Bronze	ASTM B62
CU-21	Spacer	Bronze	ASTM B62
CU-22	Arm Bushing	Bronze	ASTM B62
CU-23	Disc Seat Bearing	Bronze	ASTM B62



Rubber



Bronze



SWING CHECK VALVE WEIGHTS

	2-1/2"	3"	4"	6"	8"	10"	12"
lbs.	44	51	80	152	313	462	660
kg.	20.0	23.1	36.3	68.9	142.0	209.6	299.4

DIMENSIONAL INFORMATION FOR FLANGE END CHECK VALVES

Size		Dimension - inches (mm)													
		E		F		FF		G		R		UU		Q	
2-1/2	(65)	6.57	(167)	3.50	(89)	8.50	(216)	1.50	(38)	7.01	(178)	5.51	(140)	2.50	(65)
3	(80)	7.48	(190)	3.78	(96)	9.50	(241)	1.50	(38)	7.52	(191)	5.98	(152)	3.00	(80)
4	(100)	8.31	(211)	4.53	(115)	11.50	(292)	1.50	(38)	9.02	(229)	7.52	(191)	4.00	(100)
6	(150)	10.59	(269)	5.51	(140)	14.00	(356)	1.75	(44)	10.98	(279)	9.49	(241)	6.00	(150)
8	(200)	12.2	(310)	6.77	(172)	19.50	(495)	1.75	(44)	13.50	(343)	11.77	(299)	8.00	(200)
10	(250)	13.86	(352)	7.99	(203)	24.50	(622)	2.00	(53)	15.98	(406)	14.25	(362)	10.00	(250)
12	(300)	16.26	(413)	9.53	(242)	27.50	(698)	2.00	(54)	19.02	(483)	17.01	(432)	12.00	(300)

CHECK VALVE ORDERING INFORMATION- Specify: Quantity, Size, and Catalog Number

CHECK VALVE PARTS ORDERING INFORMATION - Specify: Quantity, Catalog Number, Part Name, Size of Valve, Catalog Number of Valve, and Year Date of Valve